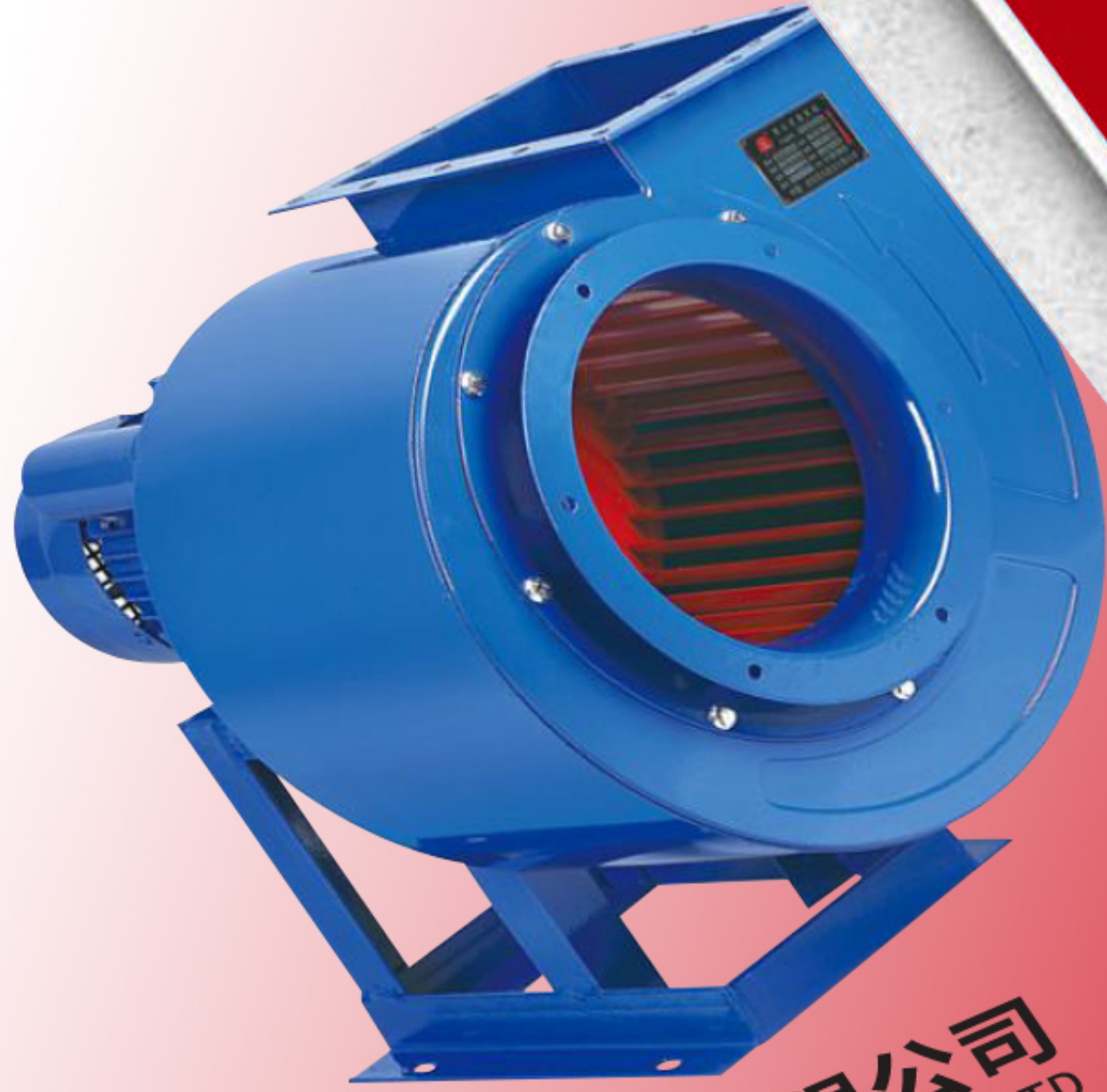


SHUNTONG
浙江·顺通

创新节能 缔造精品

2019年 风机选型目录
ISO9001 CE CCC CQC



浙江顺通电气有限公司
ZHEJIANG SHUNTONG ELECTRIC CO., LTD

浙江顺通电气有限公司
ZHEJIANG SHUNTONG ELECTRIC CO., LTD
地址：浙江省乐清市柳市后街工业区
电话：0577-61721053

BRIEF INTRODUCTION 企业简介

浙江顺通电气有限公司位于东海之滨的明珠城市台州温岭市石塘上马工业区。石塘是台州市南门工业重镇，甬台温电气化铁路，104国道贯穿全境。距台州黄岩机场18公里，四通八达，交通十分便捷。南依山峰巍峨的雁荡，北连山水秀丽的西湖，东去佛教圣地普陀，西游碧波浩瀚千岛，地理环境优美通畅。

公司创办于1995年，拥有24年历史专业生产风机行业，公司占地面积3900平方米，员工400余人，其中中高层技术管理人员100多人。产品有家用风机、民用风机、工业风机、工程风机、消防风机、建筑风机、环保风机、防腐风机、防爆风机、各种设备配套风机等，有200个系列产品2000多种风机。多年来公司本着“尊重知识，科技兴业，改革创新，追求卓越”的经营理念，突出产品的品质再造、提升品牌知名度，使公司产品不断走向全国和世界各地。

现已在全国20多个省市建立了600多个销售网点，产品出口中东、亚洲、欧洲、美洲、非洲、澳门、香港、韩国、印度、巴基斯坦、俄罗斯、沙特阿拉伯、泰国、美国、澳大利亚等20多个国家地区。公司产品先后通过国家3C认证，消防认证，ISO9001:2000质量体系认证。连续多年公司被市经贸局评为“先进科技骨干企业”“中国风机协会会员单位骨干企业”。

Zhejiang shuntong electric co. LTD is located in the East China Sea Pearl City, Taizhou Wenling City, Shitang Shangma Industrial Zone. Shitang is the important industrial city of Taizhou South Gate, Yongtaiwen Electrification Railway and 104 National Road run through the whole territory. It is 18 kilometers away from Taizhou Huangyan Airport, and the traffic is very convenient in all directions. It is connected with the towering Yandang mountain in the south, the beautiful scenery of the West Lake in the north, the Buddhist holy site Putuo in the east, and the vast clear wave of Thousand island in the west, the geographical environment is beautiful and smooth.

The company has been founded in 1995, which has 24 years of history specializing in the production of fan industry; the company covers an area of 39,000 square meters with more than 400 employees, including senior technical managers more than 100 people. Products include household fans, civilian fans, industrial fans, engineering fans, fire fans, building fans, environmental protection fan, anti-corrosion blowers, explosion-proof fans, all kinds of equipment supporting fans, 200 series of products, and more than 2,000 kinds of fans. Over the years, the company has kept the business philosophy "Respect for knowledge, develop by technology, reform and innovation, pursue excellence", highlight the recycling quality of product, enhance the brand awareness, and supply the company's products to the country and world continuously.

Now, there are more than 600 sales outlets established in more than 20 national provinces and cities, the products have been exported to more than 20 countries and regions, such as Middle East, Asia, Europe, America, Africa, Macau, Hongkong, Korea, India, Pakistan Russia, Saudi Arabia, Thailand, United States, and Australia. The company's products have passed the national 3C certification and ISO9001:2000 quality system certification. For many years in succession, the company has been awarded as "Advanced Science & Technology Backbone Enterprise" and "Backbone Enterprise of China Association of Fans" by Municipal Economic & Trade Bureau.



目录



性能简介 Performance introduction

5-27/32/34 系列中高压铝壳风机为塑机专用风机，广泛用于塑料机械、印刷机械、吹膜机械、干燥机械等行业。具有流量大、压力高、效率高、震动小、噪音低。风机外壳为铝铸件，款式新颖，造型美观。配用防爆电机可作为防爆风机使用。电机采用 YE 系列高效节能电机，高效率、低能耗、质量好、寿命长。

5-27/32/34 series medium and high pressure aluminum shell fan is a special fan for plastic machine, widely used in plastic machinery, printing machinery, blown film machinery, drying machinery and other industries. It has large air volume, high pressure, high efficiency, low vibration and low noise. The fan casing is made of aluminum castings, which are novel in style and beautiful in appearance. It can be used as an explosion-proof fan with an explosion-proof motor. The motor adopts YE series high-efficiency energy-saving motor, which has high efficiency, low energy consumption, good quality and long service life.

5-27/32/34 系列主要参数 The main technical parameters

型号 Model	流量 Traffic (m ³ /h)	全压 Total pressure (Pa)	电压 Voltage (V)	功率 Power (kw-P)	转速 Speed (r/min)
5-34 No 3A	800	1700	380	0.75-2	2830
5-27 No 3.4A	1000	1850	380	1.1-2	2830
5-27 No 3.8A	1250	2200	380	1.5-2	2840
5-27 No 4A	1400	2600	380	2.2-2	2840
5-32 No 4.1A	2000	3300	380	3-2	2870
5-32 No 4.4A	2200	3500	380	4-2	2890
5-32 No 4.8A	2700	4000	380	5.5-2	2900
5-32 No 4.8A	3200	4500	380	7.5-2	2900



交流型
Ac type



铁壳型
Iron shell mold

性能简介 Performance introduction

CZR 系列为单相电容运转电机驱动的离心式交流鼓风机；CZT 由三相交流异步电机驱动的离心式交流鼓风机。具有风量大、风压高、耗电省、温升低、美观大方等特点。广泛适用于家庭、食堂、小型锅炉、炼铁等助燃场合及吹膜之用，也可做送风冷却之用。

CZR series is a centrifugal air blower with single-phase capacitance run-ning motor driver, CZR is a centrifugal AC blower with three-phase enclosed asynchronous motor drive. It has features such as large air volume, high wind pressure, little power consumption, low temperature, beautiful and beat appearance etc. It is widely applicable for the combustion supporting occasions such as fanmily. cabteen, small-size boiler, iron-smelting furnace etc, and for blownfilm puroses. It can be used as wind blast cooling.

离心式交流鼓风机参数 The main technical parameters

型号 Model	转速 Speed (r/min)	功率 Power (kw)	风量 Air volume (m ³ /min)	全压 Total pressure (Pa)
CZR-33	2800	0.04	0.6	135
CZR-38	2800	0.06	1.1	180
CZR-42	2800	0.08	1.7	260
CZR-45	2800	0.10	2	300
CZR-48	2800	0.12	2.5	380
CZR-52	2800	0.15	3.2	490
CZR-60	2800	0.18	4.5	540
CZR-65	2800	0.20	5.5	620
CZR/CZT-68	2800/2850	0.25	6.5	680
CZR/CZT-75	2800/2850	0.37	8.5	785
CZR/CZT-80	2800/2850	0.55	10	885
CZR/CZT-90	2800/2850	0.75	14	1000
CZR/CZT-105	2800/2850	1.1	20	1080
CZT-110	2850	1.5	23	1100
CZT-120	2850	2.2	32	1180
CZT-135	2850	3.5	50	1370



铝壳型
Aluminum shell mold



中压风机 (铝壳) (耐高温型)
Medium pressure blower (Aluminum shell)
(High temperature resistance type)

CZ 系列低噪声中压吹风机 (铁壳) 参数 The main technical parameters

型号 Model	功率 Power (W)	电压 Voltage (V)	流量 Traffic (m ³ /h)	全压 Total pressure (Pa)	噪声 Noise dB(A)
CZR-65	180	220	6	1100	66
CZR-70	250	220	7	1300	68
CZR/CZT-75	370	220/380	11	1500	80
CZR/CZT-80	550	220/380	18	1700	85
CZR/CZT-100	750	220/380	21	1900	88
CZR/CZT-110	1100	220/380	21	2050	105

CZ 系列低噪声中压吹风机 (铝壳) 参数 The main technical parameters

型号 Model	转速 Speed (r/min)	电压 Voltage (V)	流量 Traffic (m ³ /h)	全压 Total pressure (Pa)	功率 Power (kw)	噪声 Noise dB(A)
CZR-60	2800	220	5	1000	0.12	65
CZR-65	2800	220	6	1100	0.18	66
CZR-70	2800	220	7	1300	0.25	68
CZR/CZT-75	2800	220/380	11	1500	0.37	80
CZR/CZT-80	2800	220/380	18	1700	0.55	85
CZR/CZT-100	2800	220/380	21	1900	0.75	88
CZR/CZT-110	2800	220/380	21	2050	1.10	105



性能简介 Performance introduction

CTF 手提式节能低噪声轴流风机具有吸力强、轻巧实用、搬动方便、款式新颖美观等特点，是造船、机械、化工等场合最适用的专用风机。风机也可以与伸缩风管联接方便，可方便地将气体、粉尘抽送到别处和对封闭空间进行通风换气。

CTF Portable energy-saving low-noise axial flow fan has the characteristics of strong suction, light and practical, convenient moving, novel and beautiful appearance, and is the most suitable special fan for shipbuilding, machinery, chemical and other occasions. The fan can also be easily connected to the telescopic air duct, which can conveniently pump gas and dust to other places and ventilate the enclosed space.

CTF 手提式节能低噪声轴流风机 The main technical parameters

型号 Model	转速 Speed (r/min)	电压 Voltage (V)	流量 Traffic (m ³ /h)	电机功率 Motor power (kw)	全压 Total pressure (Pa)	噪声 Noise dB(A)
CTF2-2	2800	220	1300	0.12	140	62
CTF2-4	1450	220	600	0.06	20	57
CTF2.5-2	2800	220	2100	0.25	215	65
CTF2.5-4	1450	220	1000	0.09	35	59
CTF3-2	2800	220	3000	0.37	230	68
CTF3-4	1450	220	2000	0.12	59	61
CTF4-4	1450	220	5870	0.55	149	72
CTF4-2	2800	220	11000	1.5	270	75
CTF5-4	1450	220	10000	0.75	200	74
CTF5-2	2800	220	15000	1.8	300	79



管道式
Pipeline



固定式
Stationary



移动式
Mobile

性能简介 Performance introduction

BYZ T35 系列双向低噪声轴流通风机是新一代低噪声通风产品，该产品采用优化空气动力学原理设计和先进的加工技术制造，整机结构合理、坚固、安全适用，具有风量大、风压高、噪音低、耗电少、重量轻及在同一安装位置下，可实现正、反双向通风，叶片角度可根据出风要求做相应调节。叶片安装角度有 15 度-40 度 6 种。与现时国内普遍使用的轴流风机相比，风量提高 42%，风压提高 30%，噪声 (A 声级) 降低 10dB(A)，全压效率最高达 82%。风机广泛用于工厂、地下室、造船厂、养殖场、粮库、化工、医药、烟草、隧道、汽车制造厂、汽车修理厂、物流、高档酒店、饭店厨房、游乐场、酒店、商场、窑厂、瓦厂、钢铁厂、矿山、塑料机械、造纸厂等通风换气。

BYZ T35 Series two-way ventilation and low noise axial fan is a new generation of low noise ventilation products. It is manufactured with optimized aerodynamic principle design and advanced processing technology. The whole machine structure is reasonable, sturdy, safe and applicable, with large air volume and high wind pressure. Low noise, low power consumption, light weight and under the same installation position, can realize positive and negative two-way ventilation, and the blade angle can be adjusted according to the requirements of the wind. The blade installation angle is 6 degrees from 15 degrees to 40 degrees. Compared with the axial fans commonly used in China, the air volume is increased by 42%, the wind pressure is increased by 30%, the noise (A sound level) is reduced by 10dB (A), and the total pressure efficiency is up to 82%. Fans are widely used in factories, basements, shipyards, farms, grain depots, chemicals, pharmaceuticals, tobacco, tunnels, automobile manufacturers, auto repair shops, logistics, high-end hotels, hotel kitchens, playgrounds, hotels, shopping malls, kiln factories. Ventilation and ventilation of tile factories, steel plants, mines, plastic machinery, paper mills, etc.

BYZ T35 主要参数 The main technical parameters

型号 Model	转速 Speed (r/min)	风量 Air volume (m ³ /h)	全压 Total pressure (Pa)	功率 Power (kw)	噪声 Noise dB(A)
355	2900	6942	354	0.75	64
355	1450	3471	89	0.12	60
400	2900	9312	476	1.5	65
400	1450	4656	119	0.18	61
450	1450	7652	206	0.55	67
450	960	5101	92	0.18	62
500	1450	10933	215	0.75	69
500	960	7289	96	0.25	64
560	1450	14523	307	1.5	71
560	960	9682	136	0.37	66
600	1450	18592	341	2.2	73
600	960	12395	132	0.75	68
630	1450	22421	356	2.2	77
630	960	14947	158	0.75	69
710	1450	29798	442	4	80
710	960	19865	196	1.1	74
800	1450	37807	588	7.5	81
800	960	25025	261	2.2	73
900	1450	51387	755	15	84
900	960	34258	336	4	75
1000	1450	69513	877	18.5	88
1000	960	46342	390	5.5	79

DF 系列多翼式低噪声离心鼓风机 Series low noise multi-wing centrifugal fan



DF



DF 耐高温风冷式

性能简介 Performance introduction

DF 低噪声多翼式送风机风量，震动小且用途多样，该产品可用于冷暖空调设备，一般工厂，无菌无尘室等环境作空调、冷暖循环、排送风、通风等用途；可用于产业机械如包装机，收缩机，紫外线干燥机、电信、电气、电子、轮船、造纸厂、晒图机、塑料机械、热风烤箱、曝光机、压膜机、大型印刷机等多种机械作干燥、送热、散热等用途；可用于厨房油烟抽风，亦可用于充气设备如广告充气拱门，充气跳垫等等，功能相当多样且广泛。送风机的出风口可视实际需求装配圆形或方形外框及作适当的角度调整，马达采用直联式，体积小，不占空间，易于维修保养。

DF Low noise multi-wing centrifugal fan large air volume, small vibration and versatile. The product can be used for heating and air conditioning equipment, general factory and in clean environment for air conditioning, heating and cooling cycle, air supply, ventilation and other uses; It can be used for industrial machinery, such as Packaging machine, Harvester, UV dryer, Telec-ommunications, Electrical, Electronics, Ships, The paper mill, Blueprinter, Plastic Machinery, Hot air oven, Exposure machine, Pressing machine, Large printing presses and other machinery for dry, sending heat, radiating and other uses; It can be used for kitchen fume exhauster. And also can be used for charging equipment such as widely. According the actual demand, the outlet of the blower can be installed with round or square frame and appropriate angle adjustment. The motor adopts direct type. It's small volume, No estimate space and easy to repair and maintenance.

DF 型主要参数 The main technical parameters

机号 Immediately	功率 Power (W)	转速 Speed (r/min)	电压 Voltage (V)	风量 Air volume (m ³ /h)	气压 Air pressure (Pa)	噪声 Noise dB(A)
DF-1	90	2800	220	240	330	72
DF-1	120	2800	220/380	305	390	72
DF-2	180	2800	220/380	405	450	75
DF-3	250	2800	220/380	505	860	75
DF-4	370	2800	220/380	660	860	76
DF-5	550	2800	220/380	850	1020	76
DF-6	750	2800	220/380	1200	1210	80
DF-7	1100	2800	220/380	1600	1530	80
DF-8	2200	2800	220/380	3000-5000	1471-1275	84
DF-9	3000	2800	220/380	4500-7500	1580-1800	85

可定制耐高温隔离式，温度可达 100-150℃
It is available to order the type of isolated high temperature up to 100-150℃

DF 中压离心鼓风机 Middle pressure centrifugal fan



性能简介 Performance introduction

DF 型中压低噪声离心式鼓风机的工艺设计精良、材料坚固、性能稳定可靠，降噪效果显著，该机具有噪声低、效率高、寿命长、安装方便等特点，广泛适用于电信、电力、电气、地质、煤矿、轮船、造纸等行业和部门，特别适用于塑料机械、印刷机械、晒图机、烘干机、吹塑机及地下设施等场所的冷却、温控和通风作用。

Model DF low noise centrifugal fan is of consummate craft and technological design, firm material, stable and reliable performance, outstanding noise-decrease effects. It has the features such as low noise, high efficiency, long life, easy installation etc. It is widely applicable for the industries and departments such as telecom, electric force, electrical electronics geology coal mine, steamboat paper-making etc. It is especially fit for the cooling temperature-control, ventilation functions in the plastics, printing machinery, copying machine, drying machine, blow machine, underground facilities etc.

DF 中压离心鼓风机系列主要参数 The main technical parameters

型号 Model	电压 Voltage (V)	功率 Power (W)	流量 Traffic (m ³ /h)	全压 Total pressure (Pa)	频率 Frequency (Hz)	转速 Speed (r/min)
DF80	220/380	1100	1400	2100	50	2800
DF90	220/380	1500	1830	2580	50	2800
DF10	220/380	2200	2300	3200	50	2800
DF012	380	3000	2600	3500	50	2800

TF950 型强力吹干机 Strong blowing fan



性能简介 Performance introduction

TF950 型强力吹干机，该风机具有操作方便，使用安全，吹干或通风效果优良等优点。特别适用于宾馆、酒店、办公大楼、展览场所、卫生间、大型公共场所等。清洁后的地毯地面进行吹干，还可以用作通风散热。

TF950 strong blowing fan, there are some advantages of the fan, which is easy to operate and safe to use and has good drying and ventilation. It is especially applicable to hotels, restaurants, office buildings, exhibition sites, toilets, large public places, etc. and it can dry the carpet floor cleaning, and can be used for ventilation and heat dissipation.

TF950 型强力吹干机主要参数 The main technical parameters

型号 Model	频率 Frequency (Hz)	功率 Power (kw)	额定电压 Rated voltage (V)	风量 Air volume (m ³ /h)	颜色 Color
TF950	50	950	220	L 档: 110 M 档: 120 H 档: 160	蓝

JS 系列低噪声方型带百叶通风扇 (负压风机) Series low noise square shutter ventilator (suction fan)

性能简介 Performance introduction

JS 系列低噪声方型带百叶通风扇是一种结构简单，噪音较低的一种方形轴流风机，具有流量系数较大，结构紧凑，安装与移动方便等特点。风机由叶轮、机壳、电机、与传动机组等部分组成，采用皮带轮传动 (C)，输送的介质应为无腐蚀性的无易燃易爆气体，其工作温度为 -10℃ -60℃ 之间，所含有的尘土及硬质细颗粒不得大于 150 毫克 / 立方米。广泛用于工矿企业、仓库、办公室、住宅等通风换气场所。

JS square axle draft fan is one kind of structure is simple, noise lower one kind of square shaft customs handed down from past generation machine. Has the discharge coefficient in a big way, the structure is compact, characteristic and so on installation and motion convenience. Air blower by impeller, The cabinet, the electrical machinery, with the transmission unit and so on the partial compositions, use the pulley drive (C). Transportation. The medium should for noncorrosiveness not flammable explosive gas, its operating temperature be -10℃ -60℃ it includes the dust and the flinty fine-grain does not have to be bigger than 150 milligrams/cubic meters. Widely uses in the type or enterprise. The warehouse, the office, the housing and so on well ventilated takes a breath the place.



JS 系列主要参数 The main technical parameters

机号 Immediately	风叶直径 Windvane diameter (mm)	风叶转速 Windvane speed (r/min)	电机转速 Motor speed (r/min)	风量 Air volume (m ³ /h)	噪声 Noise dB(A)	功率 Power (kw)	电压 Voltage (V)
JS620 型	500	1400	1400	16500	65	0.37	380
JS800 型	710	520	1400	21000	70	0.37	380
JS1000 型	900	520	1400	28000	70	0.55	380
JS1100 型	1000	480	1400	31000	70	0.75	380
JS1100A 型	1000	480	1400	31000	70	0.75	380
JS1380 型	1250	420	1400	42000	70	1.1	380
JS1380A 型	1250	420	1400	42000	70	1.1	380
JS1530 型	1400	400	1400	50000	70	1.5	380
JS1530A 型	1400	400	1400	50000	70	1.5	380



性能简介 Performance introduction

本系列排风扇结构合理、美观、坚固、耐用、噪音低、耗能少。适用于宾馆、酒店、厨房、酒吧、咖啡厅、KTV、棋牌室、超市、办公室、会客室、储藏室、车库、花卉、养猪、鸡场、卫生间、机械设备配套等，送风、排风、回风。

This series fan is reasonable, beautiful, strong, durable, low noise, low energy consumption. For in the guesthouse, hotel, kitchen, bar, coffee shop, KTV, chess room, super markets, offices, reception room, chess room, storage room, garage, flowers, pig, chicken, bath rooms, mechanical equipment and other, air supply, exhaust and return.

FAQ 系列主要参数 The main technical parameters

机号 Immediately	电压 Voltage (V)	频率 Frequency (Hz)	输入功率 Input power (w)	转速 Speed (r/min)	风量 Air volume (m ³ /h)	外形尺寸 Outline dimension (mm)	安装尺寸 Assembly size (mm)	台/件 Set/Pc
FAQ-300	220	50	125	1400	1800	355x355	298x298	6
FAQ-350	220	50	280	1400	2800	405x405	324x324	6
FAQ-400	220	50	320	1400	3600	480x480	393x393	6

SFB 系列壁式轴流通风机
Series wall axial flow fan



性能简介 Performance introduction

本系列排风扇结构合理、美观、坚固、耐用、噪音低、耗能少。适用于宾馆、酒店、厨房、酒吧、咖啡厅、KTV、棋牌室、超市、办公室、会客室、储藏室、车库、花卉、养猪、鸡场、卫生间、机械设备配套等，送风、排风、回风。

This series fan is reasonable, beautiful, strong, durable, low noise, low energy consumption. For in the guesthouse, hotel, kitchen, bar, coffee shop, KTV, chess room, super markets, offices, reception room, chess room, storage room, garage, flowers, pig, chicken, bath rooms, mechanical equipment and other, air supply, exhaust and return.

SFB 系列主要参数 The main technical parameters

机号 Immediately	电压 Voltage (V)	频率 Frequency (Hz)	输入功率 Input power (w)	转速 Speed (r/min)	风量 Air volume (m ³ /h)	全压 Total pressure (Pa)	外形尺寸 Outline dimension (mm)	安装尺寸 Assembly size (mm)	接管口径 Caliber connecting pipe (mm)
SFB-150-2	220	50	40	2800	900	135	190x190	163x163	Φ150
SFB-180-2	220	50	60	2800	1100	145	230x230	198x198	Φ180
SFB-200-2	220	50	80	2800	1350	150	250x250	212x212	Φ220
SFB-250-2	220	50	100	2800	2150	215	300x300	244x244	Φ250
SFB-300-2	220	50	280	2800	3100	230	355x355	298x298	Φ300
SFB-300-4	220	50	125	1400	1800	70	355x355	298x298	Φ300
SFB-350-2	220	50	450	2800	5500	250	405x405	324x324	Φ360
SFB-350-4	220	50	280	1400	2800	110	405x405	324x324	Φ360
SFB-400-2	220	50	550	2800	7500	260	480x480	393x393	Φ420
SFB-400-4	220	50	320	1400	4600	130	480x480	393x393	Φ420



性能简介 Performance introduction

FA 系列为单相电容运转电机轴流式排气风扇，FTA 为三相异步电机轴流式排气风扇。本系列产品结构合理、美观、坚固、耐用、噪音低、耗能少、适用于工厂、仓库、办公楼、食堂厨房、地下室等一般环境下做排气通风、防爆降温之用。

FA series is a single-phase capacitance running motor axial-flow type exhaust fan. FTA is a three-phase asynchronous motor axial-flow exhaust electric fan. This series product is reasonable structure, beautiful appearance, fine firmness and durability, energy consumption. It is applicable for the exhaust, ventilation, stroke prevention, cooling purposes in the common environments such as factory, warehouse office building, canteen kitchen, basement etc.

轴流式参数 The main technical parameters

型号 Model	输入功率 Input power (w)	转速 Speed (r/min)	流量 Traffic (m ³ /min)
FA-30	80	1380	28
FA-35	120	1380	32
FA-40	150	1380	48
FTA-40	150	1380	48
FA-50	350	1450	98
FTA-50	350	1450	98
FA-60	600	1450	170
FTA-60	600	1450	170
FTA-75	850	960	265

FAG 防爆排风扇
Against explod exhaust fan



性能简介 Performance introduction

FAG 防爆排风扇（以下简称排风扇）适用于含有 II 类 B 级 T4 组及其以下的爆炸性气体混合物的危险场所 1 区和 2 区中，在交流 50Hz，电压至 220V、380V 的线路中作为通风降温之用。

排风扇能在下列条件下可靠工作：

1. 海拔不超过 2000m;
2. 周围环境温度 -20℃ ~ +40℃;
3. 周围空气相对湿度不大于 95% (25℃时) ;
4. 具有 II 类 B 级 T4 组及其以下的爆炸性危险场所的 1 区和 2 区中。

Against explod Exhaust Fan (Exhaust Fan) to be suitable to includes II kind of B the level T4 group and it's the below explosive gas in the body mixture dangerous place 1 area and 2 areas, in exchanges 50Hz, the voltage to 220V, in the 380V line the achievement ventilates Using of the temperature decreases.

The ventilating fan can under the following condition the reliable work:

1. The elevation does not surpass 2000m;
2. Environment temperature -20℃ ~ +40℃ ;
3. Periphery the spatial gas phase is not bigger than 95% by the humidity (25℃ When C);
4. Has II kind of B the level T4 group and its in the below fire damp dangerous place 1 area and 2 areas.

FAG 防爆排风扇参数 The main technical parameters

型号 Model	风叶直径 Windvane diameter (mm)	输入功率 Input power (kw)	风量 Air volume (m ³ /min)	电压 Voltage (V)	防爆标志 Explosion-proof marks	防护等级 Protection grade	进线口螺纹 Thread of inlet (G)	电缆外径 Cable diameter (Φmm)
FAG51-300	300	0.18	48	220/380	Exd II BT4	IP54	3/4	10-14
FAG51-400	400	0.25	68	220/380	Exd II BT4	IP54	3/4	10-14
FAG51-500	500	0.55	110	220/380	Exd II BT4	IP54	3/4	10-14
FAG51-600	600	0.75	160	220/380	Exd II BT4	IP54	3/4	10-14

性能简介 Performance introduction

该系列风机由外转子单相电容运转异步电动机或单相异步电动机、双法兰圆筒型机壳、网架和风叶组成。具有风量、振动小、噪音低、运行可靠等优良性能，该风机主要用于需要风量大、地面自动控制装置、大型电子设备、医疗设备、计算机、办公用品自动化、电焊机等行业的风扇散热之用。亦可在建筑物、厂房作为通风、换气、净化等使用。

Ventilator of this series is constituted of single phase capacitance forced asynchronous motor with external rotor or three phase asynchronous motor, double-flange cylinder shell, network frame and blade. It boasts the characteristics of strong wind, feeble vibration, low noise and reliable performance, etc. This ventilator is mainly used for ventilation and heat elimination in industries including ground servomechanism, large scale electronic equipment, medical treatment facilities, computer, office automation, welding machine where strong wind is needed. It can also work for ventilation, air exchanging and purification on buildings and factories.

产品分类：管道式、固定式、岗位式

使用环境：
环境温度：-40℃~+55℃
海拔高度：55Kpa(2500m)
相对湿度：90%~95%

型号说明：
XXX: 风机号 (风机叶轮外径毫米数)
FZY: 产品名称代号 (F-风机, Z-轴流式, Y-圆筒式)
D: 380V E:220V 2: 两极 4: 四极

Classification of products: Pipe style, station style

Operation environment:
Temperature of the environment:
-40℃~+55℃
Height above seal level: 55Kpa(2500m)
Relative humidity: 90%~95%

Model instruction
XXX: Ventilator model (outside diameter of impeller of ventilator, mm)
FZY: Name code (F-Ventilator, Z-axis flow, Y-cylinder)
D: 380V E:220V 2: two poles 4: four poles

FZY 系列性能参数 The main technical parameters

机号 Immediately	频率 Frequency (Hz)	电压 Voltage (V)	输入功率 Input power (w)	转速 Speed (r/min)	风量 Air volume (m³/h)	噪声 Noise dB(A)
FZY-2E200	50	220	75	2400	1050	65
FZY-2D200	50	380	75	2400	1050	65
FZY-4E200	50	220	55	1450	510	53
FZY-4D200	50	380	55	1450	510	53
FZY-2E250	50	220	185	2300	2100	69
FZY-2D250	50	380	185	2300	2100	69
FZY-4E250	50	220	70	1450	1300	55
FZY-4D250	50	380	70	1450	1300	55
FZY-2E300	50	220	230	2300	3000	69
FZY-2D300	50	380	230	2300	3000	69
FZY-4E300	50	220	95	1450	2200	61
FZY-4D300	50	380	95	1450	2200	61
FZY-4E350	50	220	130	1450	3500	64
FZY-4D350	50	380	130	1450	3500	64
FZY-4E400	50	220	185	1450	5300	68
FZY-4D400	50	380	185	1450	5300	68
FZY-4E500	50	220	380	1450	8500	74
FZY-4D500	50	380	380	1450	8500	74
FZY-4E600	50	220	850	1450	14800	83
FZY-4D600	50	380	850	1450	14800	83



性能简介 Performance introduction

ZTF 直筒风机系列，是国内先进技术而设计的新型节能低噪音风机。进风口和出风口、外形尺寸相同。风机直接与风管连接，能够极大地给用户节省管道设计，安装方便、用电省，适用于宾馆、酒店、办公室、会客室、酒吧、咖啡厅、KTV、棋牌室、超市、储藏室、车库、花卉、养猪、鸡场、卫生间、机械设备配套等，送风、排风、回风。

ZTF straight pipe fan series are the new energy-saving low-noise fans which are designed by the advanced technology. Inlet & outlet of wind and dimensions are the same. Fan is directly connected to the wind pipe, which can save the pipeline for the users greatly, easy to install, save electricity, and it can blow air, ventilate and return air for hotels, restaurants, offices, meeting rooms, bars, cafes, KTV, chess rooms, supermarkets, storage rooms, garages, flowers, pig & chicken farms, toilet, machinery & equipment, etc.



ZTF 系列性能参数 The main technical parameters

机号 Immediately	电压 Voltage (V)	功率 Power (w)	转速 Speed (r/min)	风量 Air volume (m³/h)	全压 Total pressure (Pa)	噪声 Noise dB(A)
100-4寸	220	18	2600	170	60	40
150-6寸	220	37	2600	408	120	45
200-8寸	220	48	2600	714	160	52
250-10寸	220	98	2600	980	200	57

HF 塑料壳系列斜流静音增压管道风机
Plastic case series helical flow mute booster duct fans

性能简介 Performance introduction

HF 系列圆形管道风机是引进国外先进技术而设计的新型风机，采用外转子后倾离心风机匹配，机壳选用阻燃防火材料注塑而成其设计标准，进风口和出风口与同一直径圆形管道连接，中间主机可以轻松拆卸，使安装、拆卸、维护更简便，能够极大的节省管道设计和安装费用。它具有风量大、压力高、噪音低、振动小、耗电省、寿命长、体积小、重量轻、运行稳定等优点。其外形美观，能有效地进行空气调节，控制热气、去除潮湿、尘埃、异味、清洁，令室内空气清新，已经逐渐代替传统用于排风的轴流风机，它弥补了轴流风机静压不足的现象。广泛应用于家庭、公寓、别墅、办公室、会议室、商场、宾馆、酒楼、电影院、歌舞厅、车站等场所。

HF series circular pipeline fans are the new fans designed by foreign advanced technology, equipped with rear dumping centrifugal fan with external rotors, the cabinet is injected by the fire retardant material, for its design standards, air inlet & outlet can be connected with the same diameter pipes, the intermediate hosts can be disassembled easily, which makes installation, removal and maintenance easier, and it can save the pipeline design and installation costs greatly.

It has a large air volume, high pressure, low noise, small vibration, low power consumption, long life, small size, light weight, stable operation and the other advantages. The appearance is beautiful, it can carry out the air conditioning, control heat, remove moisture, dust, odor, and clean effectively, which makes indoor air fresh. It has gradually replaced the traditional axial fan for ventilation, it makes up the shortcoming of axial fan of static pressure, and it is used in homes, apartments, villas, offices, conference rooms, shopping malls, hotels, restaurants, movie theaters, dance halls, railway stations and other places widely.



HF 系列主要参数 The main technical parameters

机号 Immediately	频率 Frequency (Hz)	输入电流 Input current (A)	输入功率 Input power (w)	电机转速 Motor speed (r/min)	风量 Air volume (m³/h)	静压 Static pressure (Pa)	噪声 Noise dB(A)
HF100	50	0.13	35	2500	220	150	31
HF125	50	0.14	40	2500	310	180	34
HF150	50	0.22	75	2500	540	300	38
HF200	50	0.53	115	2500	900	380	43



性能简介 Performance introduction

DWEX 系列边墙风机又叫做 WEX 边墙风机，其采用先进的前掠型叶片、低噪音风机专用电机直联传动，方形外壳设计可以方便地安装在混凝土、砖墙或轻钢压型墙板上，方形防雨罩结构牢固，外形美观。具有噪声低、风量大、运行可靠、性能参数广、安装简便等特点，广泛应用于厂矿企业车间和民用、商用建筑工程的边墙壁式通风换气。根据输送介质的要求，可制成防腐，防爆型。

DWEX(WEX) 系列风机一般用于边墙式排风，配设 45° 防雨罩（或特殊制造成 60°）和防虫网（夜间可防止昆虫循灯飞入车间）。可按需要制成边墙送风机型号为 DWSP(WSP)，配设 90° 防雨罩（防风、雨、尘）和防虫网（夜间可防止昆虫循灯飞入车间）。

DWEX fan is also called WEX side wall fan, It adopts the advanced sweepforward blades and is driven directly by special low-noise motor, The design of tetragonum structure is easy for installation on concrete walls, brick walls and lightweight steel cold-formed walls, tetragonum rain cover is stable and beautiful. This series have features such as low-noise, large air-volume, safe operation, a wide range of parameters, easy installation and so on, It is widely used on side-wall ventilation in industrial workhouses and residential and business constructions. It can be made anti-corrosion and explosion-proof type according to the transmission medium.

DWEX(WEX) series fan is usually used for side-wall ventilation, equipped with 45° raincover (or specially made to 60°) and insect-resistant net (preventing insects fly into workhouses at night) It can be customized as DWSP(WSP), with 90° raincover (anti wind, rain and dust) and insect-resistant net.

DWEX(WEX) 主要参数 The main technical parameters

机号 Immediately	风量 Air volume (m³/h)	全压 Total pressure (Pa)	电压 Voltage (V)	频率 Frequency (Hz)	功率 Power (kw)	转速 Speed (r/min)
DWEX-250D4	1500	40	380	50	0.09	1450
DWEX-250E4	1500	40	220	50	0.09	1450
DWEX-300D4	1800	60	380	50	0.18	1450
DWEX-300E4	1600	60	220	50	0.18	1450
DWEX-350D4	3000	80	380	50	0.25	1450
DWEX-350E4	2800	80	220	50	0.25	1450
DWEX-400D4	5200	140	380	50	0.37	1450
DWEX-400E4	5000	140	220	50	0.37	1450
DWEX-450D4	7800	160	380	50	0.55	1450
DWEX-450E4	6300	160	220	50	0.55	1450
DWEX-500D4	9200	200	380	50	0.75	1450
DWEX-500E4	9000	200	220	50	0.75	1450
DWEX-600D4	18000	280	380	50	1.5	1450
DWEX-600D6	12000	120	380	50	0.55	960
DWEX-700D6	19000	180	380	50	1.1	960
DWEX-800D6	25000	230	380	50	2.2	960



性能简介 Performance introduction

DFBZ 系列风机具有明显的效率高、噪音低、运行平稳等特点，广泛用于工矿企业、民用建筑体育馆、各种娱乐场所的壁式排风，具有以下特点：

1. 外形美观、安装方便、整机制成方型，安装前，墙体按不同的机号预留方孔，安装时风机从墙体外侧放入墙洞，与墙体之间塞以橡皮或软木即可。
2. 风机靠外侧装有铝合金防水风口，可以防止室外雨水和自然风向室内倒灌。
3. 风机带有消声外壳，内置吸声材料，方形整体安装牢固、振动小、运行平稳、噪声低。

DFBZ series fan have remarkable features such as high efficiency, low noise, stable operation and so on, this series are widely used for ventilation in industrial places, residential constructions, gyms and other entertainment venues. Features are as follows:

1. The product is designed as tetragonum, which is beautiful and easy for installation. Before installation, reserve a square hole on the wall according to different fan type, put the fan into the hole from external wall, tuck rubbers or corks into the gap between wall and fan.

2. The fan has an aluminum alloy-made water proof outlet on external wall side, which can prevent the rain and wind from flowing back into the house.

3. The fan is equipped with a silencer shell, with a sound-absorbing material inside, tetragonum structure is firm and no sense of vibration, it operates stably with low-noise.

DFBZ(XBDZ) 主要参数 The main technical parameters

机号 Immediately	风量 Air volume (m³/h)	全压 Total pressure (Pa)	电机功率 Motor power (kw)	转速 Speed (r/min)	噪声 Noise dB(A)
2.5	600	40	0.025	1450	≤ 57
2.5	800	42	0.025	1450	58
2.5	1000	54	0.04	1450	58
2.8	950	41	0.04	1450	55
2.8	1230	45	0.04	1450	60
2.8	1650	58	0.06	1450	60
3.2	1720	56	0.04	1450	61
3.2	1940	62	0.06	1450	62
3.2	2250	68	0.09	1450	63
3.6	2010	65	0.06	1450	62
3.6	2480	73	0.09	1450	63
3.6	3370	76	0.12	1450	63
4.0	3540	89	0.12	1450	62
4.0	4080	95	0.18	1450	63
4.0	4470	109	0.25	1450	63
4.5	4510	114	0.18	1450	64
4.5	5870	121	0.25	1450	65
4.5	6360	139	0.37	1450	66
5.0	6170	135	0.25	1450	65
5.0	6920	142	0.37	1450	66
5.0	7890	147	0.55	1450	68
5.6	6400	78	0.37	960	69
5.6	7410	82	0.37	960	69
5.6	8060	94	0.37	960	70
6.3	9760	92	0.37	960	70
6.3	10570	102	0.37	960	70
6.3	12000	118	0.75	960	72
7.1	12400	132	0.75	960	72
7.1	13430	146	1.1	960	75
7.1	15240	169	1.1	960	73
8	15750	189	1.5	960	73
8	17050	208	1.5	960	73
8	19350	242	2.2	960	74



性能简介 Performance introduction

强力电风扇适用于一般环境下的工厂车间、仓库、地下室、餐厅等场所作防暑降温之用。风扇的使用环境温度不超过 +40℃，且在无腐蚀性颗粒尘埃的气体中使用。强力电风扇主要由电机、摇摆机构、风叶、网罩及壁式或落地式支架组成。风叶由铝铸成型、静平衡校正、运转平稳效率高。

Strong force electric fan is applicable for the sun-stroke prevention, cooling purposes in the occasions such as factory workshop, warehouse, basement, canteen etc. The service environmental temperature of the fan does not exceed +40℃, it can be used in the noncorrosive gas with no particle dust. Strong force electric fan is mainly composed of motor swing mechanism, fly, screen cover, wall type, floor type support frame. The fly has been formed by aluminum die-casting with static balancing correction, smooth through-ringing and high efficiency-casting with static balancing correction.

强力电风扇主要参数 The main technical parameters

型号 Model	转速 Speed (r/min)	输入功率 Input power (kw)	风量 Air volume (m ³ /h)	噪声 Noise dB(A)
FT-50	1400	200	110	55
FR-50	1400	200	110	55
FT-60	1400	230	120	62
FR-60	1400	230	120	62
FT-65	1400	260	155	68
FR-65	1400	260	155	68
FT-75	1400	300	170	75
FR-75	1400	300	170	75

CBF 防爆轴流风机
Series explosion-proof axial fan



性能简介 Performance introduction

本系列产品适用于II类B级T4组及以下级别、组别的爆炸性气体混合物(1区和2区)场所,作为厂房、仓库通风换气或加强暖气散之用。

本系列产品还可根据用户要求才、增设安装架。

本系列产品符合防爆标志 Exd II BT4 要求。

本系列产品由防爆电机、叶片、风筒等部分组成,叶片由铝板制成,风筒用钢板与型材加工焊接而成,电源引线用钢管布线和电缆布线均可。

This series product is suitable for II kind of B the level T4 group and following rank, the group other file damp mixture (1 area and 2 areas) the place, as the workshop the warehouse well ventilated takes a breath or strengthens using of the warm air radiation.

This series product working condition is: Exchanges 50Hz, voltage 220V/380V, not heavy corrosion and remarkable dust place.

This series product also may additionally build peacefully according to installation shelf.

This series product by guards against explosions the electrical machinery, the leaf blade is made by the aluminum sheet, the wind tunnel uses the steel plate and molding processing welding becomes, the power source lead wire leads with the steel pipe wiring and with the electric cabling may, outside the shell is equipped with the earth bolt.

CBF 系列主要参数 The main technical parameters

型号 Model	叶轮直径 Impeller diameter (mm)	输入功率 Input power (kw)	风量 Air volume (m ³ /h)	电压 Voltage (V)	防爆标志 Explosion-proof marks	防护等级 Protection grade	进线口螺纹 Thread of inlet (G)	电缆外径 Cable diameter (mm)
CBF51-300	300	0.18	3000	220/380	Exd II BT4	IP54	3/4	10-14
CBF51-400	400	0.37	4800	220/380	Exd II BT4	IP54	3/4	10-14
CBF51-500	500	0.55	6800	220/380	Exd II BT4	IP54	3/4	10-14
CBF51-600	600	0.75	9800	220/380	Exd II BT4	IP54	3/4	10-14



节能管道式

节能固定式

性能简介 Performance introduction

SF 型节能低噪声轴流通风机是本公司在原来的风机基础上,通过风叶和电机重新设计,改为铝合金,使其具有噪音低、风量更大、风压高、电机温升低、运行平稳等优点。可以广泛应用于窑厂、医药、轧钢、化工、轻工、食品、医药、冶金、电站、养殖厂、粮库、隧道、烟草等工作场所。本公司严格按照生产防爆电机的要求来生产通风机,绝缘等级达到 F 级。通过外壳和技术改进,提高了电机的密封性能。因此本产品可以在比较潮湿或温度比较高的环境使用(温度不能超过 60℃)。

SF series-saving lower noise axial fan is redesigned fan motor instead of aluminium alloy on the basis of original structure. It has lower noise, larger volume, higher pressure, lower motor temperature rise and so on. Our company is strictly in accordance with explosion proof motor of production requirements to manufacture them, insulation class to F. Make shell and technical improvements to enhance the sealing performance of the motor. Therefore, this product can be used in relatively high humidity or temperature environments (Not exceed 60).

SF 型节能低噪声轴流风机参数 The main technical parameters

型号 Model	转速 Speed (r/min)	电压 Voltage (V)	流量 Traffic (m ³ /h)	电机功率 Motor power (kw)	全压 Total pressure (Pa)	噪声 Noise dB(A)
SF2-2	2800	220/380	1300	0.12	140	62
SF2-4	1450	220/380	600	0.06	20	57
SF2.5-2	2800	220/380	2100	0.25	215	65
SF2.5-4	1450	220/380	1000	0.09	35	59
SF3-2	2800	220/380	3000	0.37	230	68
SF3-4	1450	220/380	2000	0.12	59	61
SF4-4	1450	220/380	5870	0.55	149	72
SF4-2	2800	220/380	11000	1.5	270	75
SF5-4	1450	220/380	10000	0.75	200	74
SF5-2	2800	220/380	15000	1.8	300	79
SF6-4	1450	380	21800	2.2	320	81
SF7-4	1450	380	26800	3	350	86
SF8-4	1450	380	38000	4	450	89



管道式



固定式



岗位式

性能简介 Performance introduction

SF 型系列轴流型表面、运转平稳、效率高、噪声低、能耗省等优点。
SF 型系列风机按使用要求分管道式、固定式、壁式、岗位式四种，按叶轮直径分 12 个机号。本系列产品广泛应用于工矿企业，民用建筑的壁式排气、岗位送风、管道通风。也应用于化工、轻工、食品、医药、冶金、电站、交通等工作场所及仓储的通风空调系统。（温度不得超过 60℃）

Model SF series axial-flow ventilator has smooth streamline surface with exceptionally good rigidity, firm paddle-wheel structure, even and flat screen cover, elegant and pleasing outline and tones. Model SF series fan is divided into pipeline type, wall type, post type four kinds according to the use requirements. It is separated into 12 machine numbers according to the paddle-wheel diameter.

This series product is widely applicable for the wall type exhaust, post blast, pipeline ventilation in the mining and industrial enterprises, civil purpose buildings. It can also be used in the working occasions of chemical, light industry, food, medicine, metallurgy, power station, communication etc and the storage ventilation air-conditioner system. (The temperature should not exceed 60℃)

SF 型低噪声轴流风机参数 The main technical parameters

型号 Model	转速 Speed (r/min)	电压 Voltage (V)	流量 Traffic (m ³ /h)	电机功率 Motor power (kw)	全压 Total pressure (Pa)	噪声 Noise dB(A)
SF2-2	2800	220/380	1300	0.12	140	62
SF2-4	1450	220/380	600	0.06	20	57
SF2.5-2	2800	220/380	2100	0.25	215	65
SF2.5-4	1450	220/380	1000	0.09	35	59
SF3-2	2800	220/380	3000	0.37	230	68
SF3-4	1450	220/380	2000	0.12	59	61
SF3.5-2	2800	220/380	6200	0.75	250	73
SF3.5-4	1450	220/380	3000	0.25	110	70
SF4-4	1450	220/380	5870	0.55	149	72
SF4-2	2800	220/380	11000	1.5	270	75
SF5-4	1450	220/380	10000	0.75	200	74
SF6-4	1450	380	18700	2.2	300	80
SF6-6	960	380	13000	1.1	180	70
SF7-4	1450	380	24500	3	350	85
SF8-4	1450	380	37200	4	435	88
SF8-6	960	380	28000	2.2	196	82
SF9-6	960	380	34470	4	250	82
SF10-6	960	380	50000	4	260	88
SF12-8	720	380	58000	4	280	90
SF14-8	720	380	72000	5.5	320	93



精品管道式



精品管道式



精品岗位式

型式特点及用途 Type characteristics and uses

SF 型低噪声轴流通风机是本公司在原先的风机基础上，通过风叶和电机重新设计，使其具有噪音更低、风量更大、风压高、电机温升低、运行平稳等特点。可以广泛用于视频、医药、冶金、电站、交通、粮库、烟草等工作场所。本公司严格按照生产防爆电机的要求来生产通风机，绝缘等级达到 F 级。通过外壳和技术改进，提高了电机的密封性能。因此本产品可以在比较潮湿或温度比较高的环境里使用（温度不得超过 60℃）

SF Type low-noise axial blower has been re-designed for the fan and motor by the company on the original fan basis, with lower noise, more air volume, higher wind pressure, lower motor rising temperature, stable running, and the other characteristics, which can be widely used in food, medicine, metallurgy, power plants, transportation, grain storage, tobacco and other workplaces. The company has produced the fans strictly in accordance with the requirements of the production of explosion-proof motor, and the insulation class is up to class F. Through the improvements of case and technology, improve the motor sealing performance, so the product can be used in relative higher environment of humid or temperature (The temperature should not exceed 60℃).

使用保养与安装 Use maintenance and installation

1. 通风机开箱后，应检查各种部件是否齐全，有无损坏变形，是否应纠正后再使用。
2. 使用前应检查电源电压是否与铭牌相符（电压允许 ±10%），并妥然接好地线，以保安全。
3. 通风机每运转 4000 小时，应清洗一次轴承，同时更换 3 号锂基脂润滑脂。
4. 通风机不宜在腐蚀性气体较强的环境中放置或使用，以免损坏电机绝缘及其它零件。
5. 本产品在使用按照使用说明书的规定，正确地使用和保养的前提下，从出售日起半年内，如因制造质量不良而发生故障，本厂负责三包，因用户使用的环境温度过高而造成电容或电线盒以电线融化、烤焦的情况导致通风机损坏，本公司不予负责。

1. Open the fan box, check whether the various components are complete, with or without deformation, which should be corrected before use.
2. Before use, the power supply voltage should be checked as the nameplate (voltage tolerance ±10%), and connect to the ground properly to ensure the safety.
3. After 4000 hours of operation each time, the fan should be cleaned once bearing, while replace with the No.3 lithium lubricant grease.
4. The fan should not be placed or used in a strong corrosive gas environment, so as not to damage the motor insulation and other parts.
5. Under the premise in accordance with the user manual and the provisions of the correct use and maintenance, the product is in warranty with six months from the date of sale in case of poor quality and manufacturing failures, the company shall not be responsible in case that the user has operated in the higher ambient temperature, which causes the capacitor or wire box to melt, burns, and damage the fan.

SF 型低噪声轴流通风机主要参数 (精品型)

Main technical parameters of SF type low noise axial flow fan (fin type)

型号 Model	叶轮直径 Diameter Impeller (mm)	功率 Power (kw)	转速 Speed (r/min)	电压 Voltage (V)	风量 Air volume (m ³ /h)	风压 Wind pressure (Pa)
SF2-4	200	0.09	1450	220	750	28
SF2-2	200	0.18	2800	220	1380	150
SF2.5-4	250	0.12	1450	220/380	1100	38
SF2.5-2	250	0.25	2800	220/380	2500	220
SF3-4	300	0.18	1450	220/380	2500	60
SF3-2	300	0.37	2800	220/380	3600	235
SF3.5-4	350	0.37	1450	220/380	4000	125
SF3.5-2	350	0.75	2800	220/380	6600	320
SF4-4	400	0.55	1450	220/380	6100	170
SF4-4	400	0.75	1450	220/380	6500	175
SF4-2	400	1.5	2800	220/380	11500	380
SF5-4	500	0.75	1450	220/380	11000	210
SF5-4	500	1.1	1450	220/380	12000	235
SF6-4	600	2.2	1450	220/380	19500	310
SF7-4	700	3.0	1450	380	26000	360
SF8-4	800	4.0	1450	380	38000	455



SFG 耐高温管道式



SFG 耐高温固定式

性能简介 Performance introduction

SFG 型耐高温防油防潮轴流通风机具有噪声低、风量大、风压高、电机温升低、运行平稳等优点。本产品广泛应用于窑厂、医药、化工、冶金、饭店、粮库、隧道、养殖厂等工作场所。本公司严格按照生产防爆电机的要求来生产通风机，绝缘等级达到F级。通过外壳和技术改进，提高了电机的密封性能。因此本产品可以在比较潮湿或温度比较高的环境里使用（温度不能超过120℃）。

SFG Heat-Resistant & oil proof & dampproof axial fan, has low noise, large air volume, high pressure, lower motor temperature rise, more smooth running than so on. It is widely used in kiln factor, pharmaceuticals, steel rolling, chemical industry, metallurgy, hotels, warehouses, tunnels, farms and other workplaces. Our company is strictly in accordance with explosion proof motor of production requirements to manufacture them, insulation class to F. Maximum ambient temperature is not exceeding 120℃.

SFG 系列主要参数 The main technical parameters

型号 Model	转速 Speed (r/min)	电压 Voltage (V)	流量 Traffic (m ³ /h)	电机功率 Motor power (kw)	全压 Total pressure (Pa)	噪声 Noise dB(A)
SFG3-2	2800	220/380	3000	0.37	230	68
SFG3-4	1450	220/380	2000	0.12	59	61
SFG4-4	1450	220/380	5870	0.55	149	72
SFG4-2	2800	220/380	11000	1.5	270	75
SFG5-4	1450	220/380	10000	0.75	200	74
SFG5-2	2800	220/380	15000	1.8	300	79
SG6-4	1450	380	21800	2.2	320	81
SFG7-4	1450	380	26800	3	350	86
SFG8-4	1450	380	38000	4	450	89



SFG 耐高温防油防潮（精品）



SFG 方形耐高温防油防潮轴流通风机

性能简介 Performance introduction

SFG 烘烤、耐高温湿度专用轴流通风机是为烟叶、药材、茶叶等烘烤而设计的风机。电机采用F级或H级绝缘，具有耐高温、抗高湿、风量大、噪音低、节能等特点。风叶采用CAD优化设计，六片弧形铝合金压铸铝叶。风叶角度可根据用户需求调节风量大小，广泛用于烟草烘干、药材干燥箱、干燥房等高温高湿场所。（温度不得超过120℃）。

SFG series baking high temperature and humidity dedicated axial fan is designed for the baking of tobacco leaf blower medicine material tea leaves. Motor with Class F and Class H insulation with high temperature, anti-humidity, high efficiency, air volume, low noise and energy saving. Blade with CAD optimized design, curved aluminum die-cast aluminum 6 leaves. Blade angle can be adjusted according to user needs air volume, widely used in the tobacco drying oven and other high temperature and humidity place medicine material. (The temperature should not exceed 120℃)

SFG 主要参数 The main technical parameters

型号 Model	叶轮直径 Diameter Impeller (mm)	功率 Power (kw)	转速 Speed (r/min)	电压 Voltage (V)	风量 Air volume (m ³ /h)	风压 Wind pressure (Pa)
SFG3-4	300	0.18	1450	380	2100	78
SFG3-2	300	0.37	2800	380	3500	240
SFG4-4	400	0.75	1450	380	6500	195
SFG4-2	400	1.5	2800	380	11500	320
SFG5-4	500	1.1	1450	380	11680	210
SFG6-4	600	2.2	1450	380	22500	330
SFG7-4	700	3.0	1450	380	27500	360
SFG8-4	800	4.0	1450	380	39000	460

TG 型无动力屋顶风机
Series no power roof fan



性能简介 Performance introduction

TG 无动力风机是响应国家节约用电的政策，利用自然资源开发出的产品。其新颖在于它以气流驱动的原理。灵敏度高，全天候运转，免电力、免维修、节省开支、降低成本、更为各企业提供了一个优良清新的空气环境，从而提高工作效率。本产品采用全不锈钢材料制成，具有防锈防腐，可抗强酸碱。适用于机构车间、喷漆车间、电镀车间、组装车间、模具车间、发电室、仓库等。

TG series no power roof fan developed per the energy saving policy to make use of the natural sources. Its top feature is no need power, only use the air flow as driven power. With much sensible, can run all time, no need power, no need to repair, energy saving, no operation cost after installation. It is made of stainless steel materials with features as antirust, anticorrosive, resistance to acid and alkali. It is widely used for workshops, painting plants, plating workshops, tooling workshops, warehouse, die casting workshops, generator rooms, warehouses, etc.

TG 主要参数 The main technical parameters

型号及机号 Type and number	外径 Outer diameter (mm)	喉径 Throat diameter (mm)	风速 Wind speed (m/s)	风量 Air volume (m ³ /h)
300	420	300	3.2-16	298-1100
500	620	500	3.2-16	824-3047
600	750	600	3.2-16	1188-4393
800	880	680	3.2-16	1526-5643

T40.KT40.BKT40 型轴流风机 Axial-flow ventilator

性能简介 Performance introduction

T40 型轴流风机适用于一般工厂、仓库、办公室、住宅内通风换气或加强暖气散热之用，若将机壳去掉则可作自由风扇。也可在较长的排气管道内间隔串联安装，以提高管道中的风压。本系列产品根据用户的需要，在结构设计上采用电机外置（电机在机壳上）皮带传动，型号为 KT40，其性能参数与 T40 风机相同，也可根据用户需要改变转速达到用户所需性能，其最大作用可以排高温气体或防潮气体。

Model KT40 axial-flow ventilator is applicable for the ventilation, air exchange, warm air radiation reinforcement in the ordinary, warehouse, office, residence and so on, it can be used as free fan after the removal of the casing it can implement the interval series connecting installation in the long exhaust pipelines in order to enhance the air pressure in the pipelines, this series product adopts external placement of motor belt transmission (the motor is the casing) in aspect of structural design according to the user's requirements, the model is KT40, its performances and parameters are the same as T40 fan. It can also change the rotating speed to fulfill the use's required performance according to the use's demands, its max. function is to exhaust the high-temperature gas or moisture-proof gas.



KT40 普通型
KT40 Standard type



KT40 全开口型
KT40 Detachable type

T40.KT40.BKT40 型轴流风机参数 The main technical parameters

机号 Immediately	转速 Speed (r/min)	配用电机 With motor (kw-p)	流量 Traffic (m ³ /h)	全压 Total pressure (Pa)	噪声 Noise dB(A)
2.5	2900	0.18-2	2010	152	71
2.5	1450	0.09-4	1010	38	56
3	2900	0.55-2	3840	219	76
3	1450	0.12-4	1740	55	61
3.5	2900	0.75-2	5520	298	80
3.5	1450	0.12-4	2760	75	65
4	2900	1.5-2	8240	390	84
4	1450	0.25-4	4120	97	69
5	1450	0.75-4	8050	152	75
5	960	0.25-6	5332	66	66
6	1450	1.5-4	13900	219	80
6	960	0.75-6	9200	96	72
7	1450	3.0-4	22100	300	81
7	960	0.75-6	14600	131	75
8	1450	5.5-4	33000	389	83
8	960	1.5-6	21800	171	79
9	960	3-6	31100	216	80
10	960	5.5-6	42700	267	82

性能简介 Performance introduction

T30 型轴流风机是一种结构简单，噪声较小的低压轴流风机。适用于厂房、仓库、办公室、住宅通风换气，加强暖气散热，也可以去掉机壳安装在排气管道内，以提高管道内气流的全压。

Model T30 axial-flow ventilator is low-pressure axial-flow ventilator with simple structure and low noise. It is applicable the ventilation, air-exchange, warm air radiation reinforcement in the factory house, warehouse, office, residence and so forth, it can also remove the casing to be in-installed in the exhaust pipeline in order to enhance pitor of air stream in the pipelines.

T30.KT30.BKT30 主要参数 The main technical parameters

机号 Immediately	转速 Speed (r/min)	配用电机 With motor (kw-p)	流量 Traffic (m ³ /h)	全压 Total pressure (Pa)
2.5	2900	0.25-2	2000	137.2
2.5	1450	0.09-4	1000	34.3
3	2900	0.37-2	3230	179.3
3	1450	0.12-4	1610	44.1
3.5	2900	0.75-2	5150	245
3.5	1450	0.18-4	2560	61.8
4	2900	1.5-2	7700	319.5
4	1450	0.25-4	3800	81.3
5	1450	0.55-4	7500	126.4
6	1450	1.5-4	13100	185.2
6	960	0.75-6	8700	81.3
7	1450	2.2-4	18000	243
7	960	0.75-6	12000	98
8	1450	5.5-4	27000	313.6
8	960	1.5-6	17800	139.2
9	960	2.2-6	25200	176.4
10	960	4.0-6	34500	225.4



T30 型轴流风机 Axial-flow ventilator

T35-11、BT35、FT35

型低噪声轴流风机 Series low noise axial-flow ventilator

性能简介 Performance introduction

T35-11、BT35、FT35 型轴流风机是替代 30K4 的产品，T35 是和国外同类产品进行了分析对比，通过优化设计确定了风机的叶轮结构，电机进行了改进设计，结构上减少了流动损失，因而使风机效率提高到 89.5%，噪声比 A 声级降低 3.6dB，又增强了叶根处的强度，避免了叶片断裂现象。

本系列风机适用于输送非易燃、易爆、无腐蚀、无显著粉尘的气体，其温度不得超过 60℃。它广泛适用于一般工厂、仓库、办公室、住宅内通风换气或加强暖气散热之用。也可在较长的排气管道内间隔串联安装，以提高管道内的压力。

BT35-11 为防爆型轴流风机，可作为易燃、易爆挥发性气体的通风换气之用。FT35-11 为防腐型轴流风机，可用于输送腐蚀性气体。其性能参数与 T35-11 一致。



T35-11、BT35、FT35 axial-flow ventilator can replace for 30K4 product. Through the analysis and comparison to T40 and other same kind overseas products, T35 confirms the fan vane and cylindrical paddle-wheel structure through the model experiment and research. It has implemented the rectified design for the motor. It reduces the flow loss in aspect of the structure, therefore the fan efficiency is 89.5% higher than before. The noise is 3.6dB lower than A noise level. It also increases the intensity of the blade root and avoids the vane breaking circumstances.

This series fan is applicable for conveying the non-flammable, explosive, non-corrosive gas with no obvious powder-dust. The gas temperature does not exceed 60℃. It is widely applicable for the ventilation, air-exchange, warm air radiation reinforcement purposes in the ordinary factory, warehouse, office, residence and soon. It can implement the interval series connection installation in the long exhaust pipelines in order to enhance the pressure inside the pipe-line.

T35-11 is an anti-explosion type axial-flow ventilator. It can be used as ventilation and air exchange for the flammable, explosive volatilizing gas etc. FT35-11 is an anti-corrosive axial-flow ventilator. It can be used to convey the corrosive gas. Its performances and parameters are the same as T35-11.

T35-11、BT35、FT35 主要参数 The main technical parameters

机号 Immediately	转速 Speed (r/min)	配用电机 With motor (kw-p)	流量 Traffic (m ³ /h)	全压 Total pressure (Pa)	噪声 Noise dB(A)
2.8	2900	0.25-2	2921	186	74
2.8	1450	0.09-4	1464	48	60
3.15	2900	0.37-2	4141	237	78
3.15	1450	0.12-4	2072	59	63
3.55	2900	0.75-2	5965	300	81
3.55	1450	0.18-4	2977	74	66
4	2900	1.1-2	8513	380	84
4	1450	0.25-4	4263	95	69
4.5	1450	0.37-4	6070	121	72
5	1450	0.55-4	8327	149	75
5	960	0.37-6	5566	64	66
5.6	1450	1.1-4	11682	186	77
5.6	960	0.37-6	7724	81	69
6.3	1450	1.5-4	16639	236	81
6.3	960	0.75-6	11016	104	72
7.1	1450	3-4	23815	300	83
7.1	960	0.75-6	15766	131	76
8	1450	5.5-4	34073	380	85
8	960	1.5-6	22556	167	78
9	960	3-6	32119	211	81
10	960	4-6	44062	261	82
11.2	960	7.5-6	61091	337	86



性能简介 Performance introduction

11-62A 型低噪声多翼离心式通风机是为适应日益发展净化工业及环保降噪的需要而设计制作的。风机在设计时采用噪声、效率等各种气动参数的多目标优化设计方法，实现了整机的最佳性能匹配。具有良好的气动性能，叶轮经严格的动平衡校正，故运转平稳、噪声低、振动小、寿命长等特点。广泛适用于单位食堂、宾馆酒楼、饮食店等公共场所的厨房排风、抽油烟或通风换气之用，并适宜在粮食机械、化工机械、塑料机械等生产设备上使用。

Model 11-62A low noise centrifugal ventilator has been designed and produced according to the requirements from the increasingly developing purification industry and environmental protection and noise decrease. The fan adopts the multipurpose optimized design schemes in aspects of noise efficiency, various pneumatic parameters. It fulfills the finest overall frame performance matching it has sound pneumatic performance. The paddlewheel, pulley have been implemented with strict static, dynamic balancing correction. Therefore it has the features such as smooth running, low noise, little vibration long life and so on. It is widely applicable for kitchen exhaust, range hood or ventilation, air-exchange in the public places such as the unit canteens, guesthouses, restaurants, eating establishments etc. It is fit for use in the production equipments such as grain; chemical; plastic machineries and so on.

11-62A 主要参数 The main technical parameters

机号 Immediately	转速 Speed (r/min)	配用电机 With motor (kw-p)	流量 Traffic (m ³ /h)	全压 Total pressure (Pa)
11-62 No2.5A	1450	0.75-4	1700-3000	450-350
11-62 No2.8A	1450	1.1-4	2600-4600	570-440
11-62 No3A	1450	1.5-4	3100-5500	600-450
11-62 No3A	1450	2.2-4	3300-5900	670-540
11-62 No3A	960	0.75-6	2700-4200	360-240
11-62 No3.2A	1450	2.2-4	3400-6500	760-570
11-62 No3.2A	960	1.1-6	2600-5000	400-320
11-62 No3.5A	1450	3-4	5100-8165	1050-900
11-62 No3.5A	1450	3-4	5300-7200	1180-1000
11-62 No3.5A	960	1.5-6	2900-5400	480-390
11-62 No4A	1450	5.5-4	9200-13700	1420-1120
11-62 No4A	960	2.2-6	4900-7900	695-590
11-62 No4.5A	960	3-6	6000-12000	905-800
11-62 No5A	960	4-6	8680-17880	815-616
11-62 No5A	960	5.5-6	9800-19300	920-640
11-62 No6A	960	7.5-6	10425-21473	1250-980



性能简介 Performance introduction

CF-11 型低噪声多翼离心式通风机是本公司为适应日益发展的净化工业及环保降噪的需要而设计制作的。风机在设计时采用噪声、效率等各项气动参数的多目标优化设计方法，实现了整机的最佳性能匹配。具有良好的气动性能，叶轮及皮带均经严格的动平衡校正，故运转平稳、噪声低、流量大、振动小、寿命长等特点。广泛适用于单位食堂、宾馆酒楼、饮食店等公共场所的厨房排风、抽油烟或通风换气之用，并适宜在粮食机械、化工机械、塑料机械等生产设备上使用。用途广泛，适应性强。

Model CF-11 Low noise multi-vane centrifugal ventilator has been designed and manufactured by our factory in order to adapt to the requirements of the increasingly developed purification industry and environmental protection & noise-decrease. The fan adopts the multi-purpose optimized design methods for various pneumatic parameters such as noise, efficiency etc. It fulfills the finest performance matching of the overall frame with sound aerodynamic performance. The paddle-wheel, pulley have been implemented with strict static and dynamic balancing correction, long life etc. It is widely applicable for the kitchen, exhaust of range hood, ventilation air-exchange in the public places such as unit canteen, hotel restaurant, snack counter and so forth. It is also fit for use in the production equipments of the grain; chemical; plastic machine etc. It is of wide use and strong adaptability.

CF-11 型主要参数 The main technical parameters

型号 Model	功率 Power (kw-P)	流量 Traffic (m ³ /h)	转速 Speed (r/min)	全压 Total pressure (Pa)
CF-11 No2A	1.1-2	1900-2500	2800	1200-959
CF-11 No2A	0.25-4	790-1120	1450	380-260
CF-11 No2.5A	3-2	4500-5800	2800	1850-1550
CF-11 No2.5A	0.55-4	2050-3030	1450	490-390
CF-11 No2.8A	0.75-4	2500-3800	1450	550-420
CF-11 No3A	1.1-4	2890-4300	1450	730-580
CF-11 No3A	1.5-4	3100-5000	1450	840-650
CF-11 No3.2A	1.5-4	4500-6200	1450	890-650
CF-11 No3.2A	0.75-6	2400-3500	960	420-340
CF-11 No3.5A	2.2-4	5100-6700	1450	1200-1000
CF-11 No3.5A	3-4	5300-7200		1180-1000
CF-11 No3.5A	1.1-6	3380-4440	960	530-440
CF-11 No4A	4-4	8712-11188	1450	1302-1040
CF-11 No4A	1.5-6	3900-6500	960	590-520
CF-11 No4.5A	5.5-4	10300-16000	1450	1300-760
CF-11 No4.5A	3-6	7000-9000	960	750-600
CF-11 No5A	5.5-6	14800-22000	960	870-680



性能简介 Performance introduction

YW5-47 型风冷耐高温锅炉引风机是锅炉行业专家根据当前锅炉特点专门研发的一种经济实用型锅炉引风机。主要由耐高温电机，风机壳，叶轮，隔热连接头，散热风叶等部件组成。其显著特点就是在高温电机与风机壳之间的隔热连接头处装有独立散热风叶，从而使电机达到前后两头同时自冷却，以确保电机在高温环境中能长期正常运行。是目前国内外小型锅炉用的首选引风机产品；也可用于特定环境下需要通风，换气，冷却的场所。其温度输送介质在 160℃-200℃。

YW5-47 boiler used high temperature draft fan adopts advanced design special for modern boilers. It consists of high temperature motor, fan casing, impellers, heat insulation connector, heat defusing blades, etc. Its significant feature is double cooling points for motor itself. It can be used under high temperature conditions at 160 °C -200 °C . It has features as low noise, high efficiency, light fan body, little vibrations, fast heat defusing, long use life, etc. It is widely used for boiler draft, air supply, air exchanging, heat defusing, and other places with high temperature between 160℃ -200℃ .

YW5-47 主要参数 The main technical parameters

配用电机 With motor (KW)	转速 Speed (r/min)	电压 Voltage (V)	流量 Traffic (m³/h)	全压 Total pressure (Pa)
0.18	2800	220/380	350-650	520-400
0.25	2800	220/380	410-900	600-470
0.37	2800	220/380	520-1150	700-550
0.55	2800	220/380	680-1450	880-680
0.75	2800	220/380	880-1850	1050-790
1.1	2800	220/380	1250-2300	1240-940
1.5	2800	220/380	1400-2800	1350-1140
2.2	2800	380	1800-3100	1830-1280
3	2800	380	2500-3600	2520-1500
4	2800	380	3100-3680	2900-2000
5.5	2800	380	3680-4300	3200-2400
7.5	2800	380	4300-4600	3500-2800



性能简介 Performance introduction

YN5-47 小型锅炉引风机（风冷耐高温），是我公司借鉴国外先进样机的基础上，根据国内锅炉行业专业研发的高效率，低噪音的一种新型锅炉风机。是目前国内锅炉行业中噪音最低、振动最小的风机之一，达到国内领先水平。电机采用 Y2 铝合金压铸材质，大幅度降低重量，达到轻量化，方便安装，造型新颖。电机主要元器件采用高温材料（高温轴承、高温油脂、高温绝缘材料等）。采用隔热连接座（内设散热风叶）与风壳连接，对电机进行降温，确保电机高温下正常运转。广泛应用于采暖炉、热风炉、数控锅炉、蒸汽锅炉、干燥、化工、食品、粮食机械等相关行业。风机正常使用温度：160℃-200℃。

YN5-47 small boiler fan (air-cooling and heat resistance) is a new high-efficiency, low-noise boiler fan which is produced based on foreign advanced prototype and domestic boiler industry. It is one of the fans with lowest noise and minimum vibration in the domestic boiler industry, which has reached the domestic leading level. The motor adopts Y2 aluminum alloy die-casting material, which greatly reduces weight, and achieves the light weight, convenient installation and novel modeling. The main components of motor adopt heat-resisting materials (high-temperature bearings, high-temperature grease, high-temperature insulating material, etc.) The heat insulation connecting seat is connected with the fan shell, and the motor is cooled, so as to ensure the normal operation of motor at high temperature. It is widely applied in heating furnace, air heater, numerical control boiler, steam boiler, drying, chemical, food, grain machinery and other related industries. The normal operating temperature of fan is 160℃ -200℃ .

YN5-47 主要参数 The main technical parameters

配用电机 With motor	转速 Speed (r/min)	电压 Voltage (V)	流量 Traffic (m³/h)	全压 Total pressure (Pa)
60W	2800	220/380	240	310
90W	2800	220/380	350	360
120W	2800	220/380	480	450
180W	2800	220/380	650	510
250W	2800	220/380	860	580
370W	2800	220/380	1100	650
550W	2800	220/380	1450	680
750W	2800	220/380	1810	790
1100W	2800	220/380	2250	940
1500W	2800	220/380	2800	1140
2200W	2800	380	3100	1280

4-72 型离心通风机 Centrifugal ventilator



A 式



耐高温风冷式



可定做 304 不锈钢材质

性能简介 Performance introduction

4-72 型离心式通风机可输送空气和其他不自燃、对人体无害对钢材无腐蚀性的气体。气体内不允许有粘性物质，所含尘土及硬质颗粒物不大于 150mg/m³。气体温度不得超 80℃。该风机具有良好的启动性能、运转平稳、振动小、效率高、寿命长等特点，共有 A、B、C、D 四种结构。该风机广泛用于工矿企业、大型建筑物、宾馆酒楼等室内通风换气。

Model T4-72 Centrifugal ventilator can convey air and other non-hypergolic gas which are not harmful to the human body and will not corrode steel and iron materials. The adhesive materials are not allowed in the gas. Its containing dust and hard particles should not exceed 150mg/m³, gas temperature not exceed 80℃. It has sound pneumatic performance. Therefore it has features such as balanced running, little vibration, high efficiency, long life etc. It is widely applicable for the indoor ventilation, air-exchange, exhaust in the mining and industrial enterprises, large-size architectures, gu esthouse, restaurants etc.

4-72A、D 主要参数 The main technical parameters

(可定制耐高温风冷式，温度可达 120-180℃)
(It is available to order the type of air cooled high temperature up to 120-180℃)

机号 Immediately	转速 Speed (r/min)	配用电机 With motor (kw-p)	流量 Traffic (m ³ /h)	全压 Total pressure (Pa)
2A	2900	0.75-2	412-859	507-309
2.5A	2900	0.75-2	805-1677	792-483
2.8A	2900	1.5-2	1131-2356	994-606
3.2A	2900	2.2-2	1688-3517	1300-792
3.2A	1450	1.1-4	844-1758	324-198
3.6A	2900	3-2	2664-5268	1578-989
3.6A	1450	1.1-4	1332-2634	393-247
4A	2900	5.5-2	4012-7419	2014-1320
4A	1450	1.1-4	2006-3700	501-329
4.5A	2900	7.5-2	5712-10562	2554-1673
4.5A	1450	1.1-4	2856-5281	634-416
5A	2900	15-2	7728-15455	3187-2019
5A	1450	2.2-4	3864-7728	790-502
5.6A	1450	3-4	7062-9885	957-759
6A	1450	4-4	6677-13353	1139-724
6A	960	1.5-6	4420-8841	498-317
7.1A	1450	11-4	12676-20513	1573-1168
8A	1450	18.5-4	15826-29344	2032-1490
8A	1450	5.5-6	10478-19428	887-651
6D	1450	4-4	6677-13353	1139-724
6D	960	1.5-6	4420-8841	498-317
8D	1450	18.5-4	15826-29344	2032-1490
8D	960	5.5-6	10478-19428	887-651
10D	1450	55-4	40441-56605	3202-2532
10D	730	7.5-8	20360-28497	805-637
10D	960	18.5-6	26775-37476	1395-1104
12D	960	45-6	46267-64759	2013-1593
12D	730	18.5-8	35182-49244	1160-919

4-72C 主要参数 The main technical parameters

机号 Immediately	转速 Speed (r/min)	配用电机 With motor (kw-p)	流量 Traffic (m ³ /h)	全压 Total pressure (Pa)
2.8	2900	1.1-2	1131-2356	994-606
2.8	2200	0.37-2	994-1522	556-443
2.8	1800	0.25-2	813-1245	372-296
3.2	2900	1.5-2	1688-3517	1300-792
3.2	2200	0.75-2	1483-2273	726-579
3.2	1800	0.55-2	1213-1860	486-387
3.6	2900	3-2	2664-5268	1578-989
3.6	2200	1.5-2	2310-3434	881-723
3.6	1800	0.75-2	1890-2810	590-483
4	2900	5.5-2	4012-7419	2014-1320
4	2300	2.2-2	3573-5491	1238-917
4	2000	1.5-2	3107-4775	936-694
4	1700	1.1-2	2641-4058	676-501

4-72 型离心通风机 Centrifugal ventilator



C 式 (普通型)



4-72NO6C(可定做加强型)



4-72NO8C

4-72C 主要参数 The main technical parameters

机号 Immediately	转速 Speed (r/min)	配用电机 With motor (kw-p)	流量 Traffic (m ³ /h)	全压 Total pressure (Pa)
4.5	2900	7.5-2	5712-10562	2554-1673
4.5	2300	4-2	5088-7819	1570-1163
4.5	2000	3-2	4428-6799	1187-879
4.5	1700	2.2-2	3761-5779	858-635
5	2900	15-2	7728-15455	3187-2019
5	2300	7.5-2	7022-11363	1978-1468
5	2000	5.5-2	6106-9881	1495-1110
5	1700	3-2	5190-8399	1080-802
6	2240	15-4	10314-20628	2734-1733
6	2000	11-4	9209-18418	2176-1380
6	1800	7.5-4	8288-16576	1760-1116
6	1600	5.5-4	7367-14734	1389-881
6	1250	3-4	5756-11511	846-537
6.3	2200	18.5-2	15342-21474	2908-2303
6.3	1900	11-2	13250-18546	2169-1718
6.3	1600	7.5-4	11158-15618	1538-1218
6.3	1300	5.5-4	9066-12689	1015-804
7.1	1800	18.5-4	15736-25265	2422-1801
7.1	1600	15-4	13987-22635	1914-1423
7.1	1450	11-4	12676-20513	1573-1168
7.1	1200	5.5-4	10490-16976	1076-800
8	1800	30-2	19646-25240	3143-3032
8	1800	37-2	28105-36427	2920-2302
8	1600	22-2	17463-22435	2478-2390
8	1600	30-2	24982-32380	2303-1816
8	1450	18.5-4	15826-29344	2032-1490
8	1350	15-4	14735-27320	1768-1295
8	1250	11-4	13643-25297	1507-1106
10	1250	37-4	34863-48797	2373-1877
10	1120	30-4	31237-43722	1902-1505
10	1000	18.5-4	27890-39038	1514-1199
10	900	15-4	25101-35134	1225-970
10	800	11-4	22312-31230	967-766
10	710	7.5-4	19802-27717	761-603
12C	1120	75-4	53978-75552	2746-2172
12C	1000	45-4	48195-60397	2185-1969
12C	1000	55-4	63953-67457	1859-1729
12C	900	37-4	43375-60712	1767-1399
12C	800	22-6	38556-41973	1395-1376
12C	800	30-6	45391-53996	1321-1104
12C	710	18.5-6	34218-47895	1097-869
12C	630	15-6	30362-42498	863-684
12C	560	11-6	31774-37776	646-540



A 式



耐高温风冷式



可定做 304 不锈钢材质

性能简介 Performance introduction

9-19、9-26 型高压离心式通风机可广泛用于输送物料、空气及无腐蚀性不自燃、不含粘性物质的气体。输送的介质温度一般不超过 80℃，所含尘土及硬质颗粒不大于 150mg/m³。适用于一般锻冶、玻璃、陶瓷、无线电、电镀、蓄电池等行业的高压强制通风和粮食、饲料、矿粉、塑料等加工行业的物料输送。

Model 9-19、9-26 High pressure centrifugal ventilator is widely applicable for conveying feed, air, non-corrosive and non-hypergolic gas which contains non-adhesive substances. Generally speaking, the conveying media temperature should not exceed 80 °C, the containing dust and hard particle not exceed 150mg/m³. It is for the high pressure forced ventilation in the industries such as forging, metallurgy, glass, ceramics, radio, electro-plating, accumulator etc. And the feed conveyance in the processing trades such as grain, forage, mineral power, plastics and so on.

9-19A、D 主要参数 The main technical parameters

(可定制耐高温风冷式，温度可达 120-180℃)
(It is available to order the type of air cooled high temperature up to 120-180℃)

机号 Immediately	转速 Speed (r/min)	配用电机 With motor (kw-p)	流量 Traffic (m ³ /h)	全压 Total pressure (Pa)
3.15A	2900	0.75-2	390-810	1919-1953
3.55A	2900	1.5-2	560-760	2545-2590
4A	2900	2.2-2	824-1264	3584-3597
4A	2900	3-2	1410-1704	3507-3253
4.5A	2900	4-2	1174-2062	4603-4447
4.5A	2900	5.5-2	2281-2504	4297-4112
5A	2900	7.5-2	1610-2844	5697-5517
5A	2900	11-2	3166-3488	5323-5080
5.6A	2900	11-2	2622-3619	7182-7109
5.6A	2900	18.5-2	3996-4901	6954-6400
6.3A	2900	18.5-2	3220-5153	9149-9055
6.3A	2900	30-2	5690-6978	8857-8148
7.1D	2900	37-2	4610-7376	11717-11596
7.1D	2900	55-2	8144-9988	11340-10426
8D	2900	75-2	6594-11649	15034-14546
8D	2900	110-2	12968-14287	14021-13362
8D	1450	7.5-4	3297-4616	3620-3647
8D	1450	15-4	5275-7144	3584-3231
9D	1450	15-4	4695-7511	4597-4551
9D	1450	22-4	8294-10171	4453-4101
10D	1450	30-4	6440-12450	5840-5495
10D	1450	37-4	13952-15455	5244-4958
11.2D	1450	45-4	9047-15380	7364-7236
11.2D	1450	75-4	17491-21713	6927-6246
11.2D	960	15-6	5990-11580	3182-2996
11.2D	960	22-6	12978-14375	2860-2705
12.5D	1450	75-4	12577-18447	9229-9310
12.5D	1450	110-4	21381-30186	9068-7822
12.5D	960	22-6	8327-14156	3975-3907
12.5D	960	37-6	16099-19985	3741-3377
14D	1450	132-4	17670-25916	11668-11771
14D	1450	220-4	30040-42409	11464-9878
14D	960	37-6	11699-17158	5004-5047
14D	960	75-6	19888-28078	4917-4249



A 式



C 式



D 式

9-26A、D 主要参数 The main technical parameters

机号 Immediately	转速 Speed (r/min)	配用电机 With motor (kw-p)	流量 Traffic (m ³ /h)	全压 Total pressure (Pa)
4A	2900	5.5-2	2198-3215	3852-3407
4.5A	2900	7.5-2	3130-3685	4910-4776
4.5A	2900	11-2	3963-4792	4661-4256
5A	2900	15-2	4293-6349	6035-5381
5A	2900	18.5-2	6349-6762	5381-5180
5.6A	2900	22-2	6032-7185	7610-7400
5.6A	2900	30-2	7766-9500	7218-6527
6.3A	2900	45-2	8588-11883	9698-8915
6.3A	2900	55-2	12699-13525	8636-8310
7.1D	2900	75-2	12292-14643	12427-12078
7.1D	2900	110-2	15826-19360	11776-10635
8D	2900	132-2	17854-20947	15955-15504
8D	2900	200-2	22640-27696	15112-13634
8D	1450	18.5-4	8792-12166	3834-3529
8D	1450	30-4	13001-13848	3421-3294
9D	1450	30-4	12518-14913	4869-4736
9D	1450	45-4	16118-19717	4620-4181
10D	1450	55-4	17172-21465	6143-5920
10D	1450	75-4	23612-30052	5761-5065
11.2D	1450	110-4	24126-36189	7747-7009
11.2D	1450	132-4	39205-42221	6691-6382
11.2D	960	30-6	15973-21963	3346-3140
11.2D	960	37-6	23959-27953	3031-2763
12.5D	1450	160-4	33540-41925	9713-9356
12.5D	1450	250-4	46117-58695	9103-7993
12.5D	960	45-6	22206-27757	4179-4028
12.5D	960	75-6	30533-38860	3921-3450
14D	1450	250-4	47121-53011	12285-12109
14D	1450	410-4	89723-123090	11830-10095
14D	960	75-6	58902-82463	5262-5188
14D	960	110-6	31197-35097	5071-4341



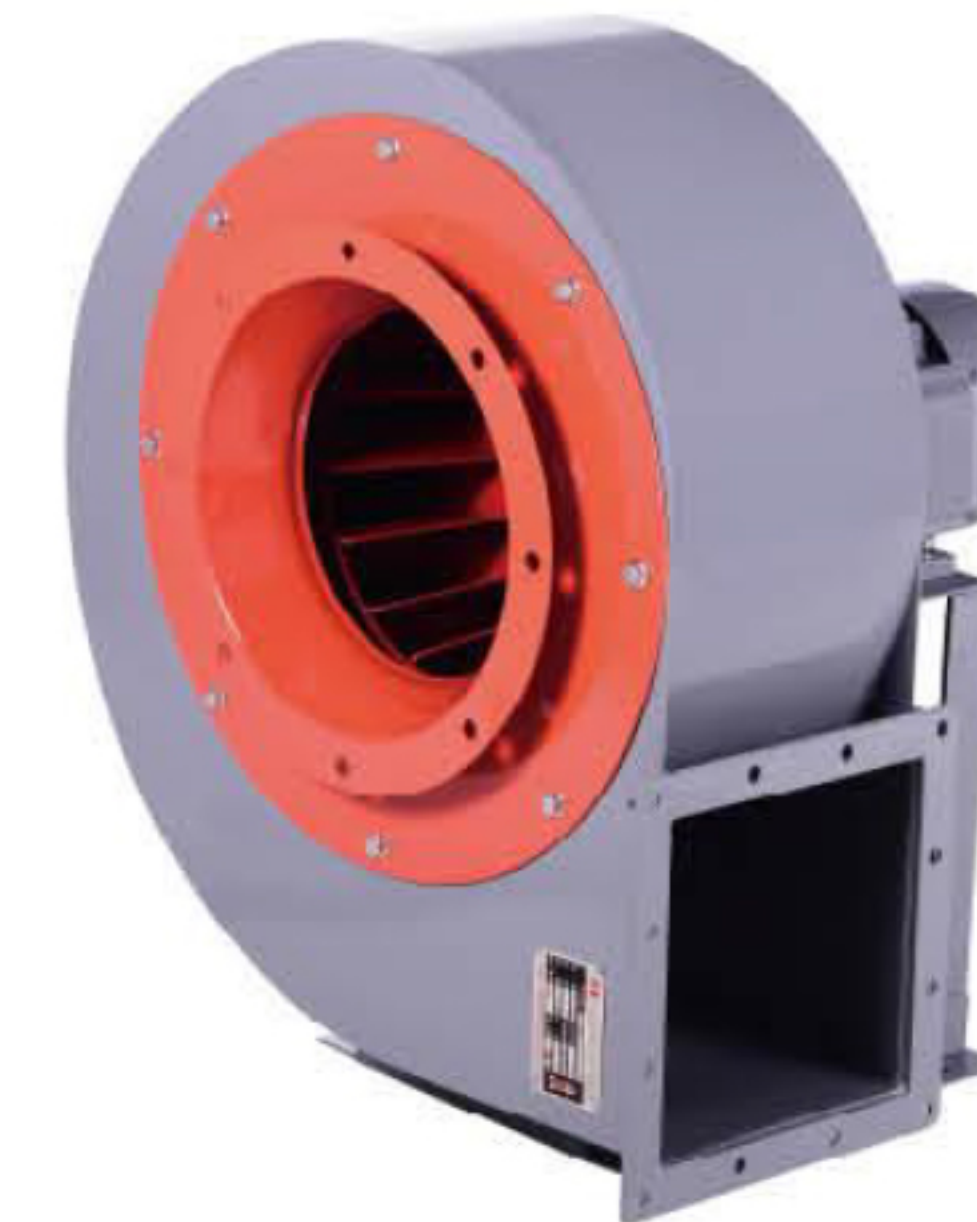
性能简介 Performance introduction

CF4-82 型系列产品均为 A 式传动，电机固定在机壳侧板上，不需另作支架，结构紧凑，便于安装摆放而且整齐美观，出风口调整方便。它采用平板叶片，能有效地减少叶片上的油污；同事有利于清洗保养。它的进风口有降噪装置，比同机号 4-72 型风机噪声低。本机专为厨房排油烟而设计，也可用于一般通风换气。

Model CF4-82 Series goods are for A-Type drive. The motor has been fixed in the side plate of the casing with no need for a support it is of compact structure, easy installation and place-ment, tidy and placement, tidy and placement, tidy and pleasing appearance, conveniently adjusted air ortlet. It adopts the flat plate vane which can effectively reduce the grease in it. Meanwhile it is also beneficial for cleaning and mainte-nance. There is a noise decrease device in their inlet, therefore the noise is much more lower than the same machine number of Model 4-72 fan. It is specially designed for kitchen grease and smoke exhaust. It can also be used for the ordinary ventilation and air-exchange.

CF4-82 主要参数 The main technical parameters

机号 Immediately	转速 Speed (r/min)	配用电机 With motor (kw-p)	流量 Traffic (m ³ /h)	全压 Total pressure (Pa)	噪声 Noise dB(A)
3.55	1450	0.55-4	2050-3050	373-248	≤ 69
4	1450	0.75-4	3050-4450	505-345	≤ 71
4.5	1450	1.1-4	3900-5454	618-428	≤ 71
5	1450	2.2-4	5850-8200	800-500	≤ 74
5.6	1450	3.0-4	8124-11475	965-625	≤ 78
5.6	960	1.5-6	4781-7219	389-252	≤ 74
6	1450	4-4	8663-13080	1008-657	≤ 84
6	960	1.5-6	5700-8660	442-286	≤ 75
6.3	1450	5.5-4	9990-15142	1110-725	≤ 85
6.3	960	2.2-6	6600-10026	488-316	≤ 76
7.1	1450	11-4	12146-21227	1544-1091	≤ 86
7.1	960	3.0-6	8044-14067	672-502	≤ 77



性能简介 Performance introduction

CF4-88 型是我公司最新研制开发的排油烟风机，随着社会的发展，楼层的增高，CF4-85 系列的老产品风机无法达到排烟换气的效果。该风机采用弧形前弯叶片，压力高，叶片数量少，易清理油污。特别适合高层建筑因为管道太长而无法达到通风换气和厨房排烟的场所。广泛用于单位食堂、饮食店、宾馆酒楼等厨房排烟送新风，及工矿企业、娱乐场所、地下室等场合的通风排烟设施配套的理想风机。

Model CF4-88 is our latest researched and developed oil extraction & smoke extractor fan. as scocial grow and floors rese, CF4-85 series fans will not achieve high efficiency. The fans use curve forward blade, higher pressure, less blades, clean easily. It's especially used for high-rise buildings. Because pipe is too long to achieve ventilation and discharge smoke. CF4-88 fans are widely applicable for kitchen exhaust, range hood or ventilation, such as carteens, guesthouses, restaurants etc. It's also fit for using in industrial industrial and mining enterprises, entertainment venues, basement.

CF4-88 主要参数 The main technical parameters

机号 Immediately	转速 Speed (r/min)	配用电机 With motor (kw-p)	流量 Traffic (m ³ /h)	全压 Total pressure (Pa)	噪声 Noise dB(A)
CF4-88 No 3.2A	2900	4-2(三)	4015-5473	2858-2596	≤ 80
CF4-88 No 3.2A	1450	0.75-4(单)	2008-3160	715-640	≤ 68
CF4-88 No 3.2A	1450	0.75-4(三)	2008-3160	715-640	≤ 68
CF4-88 No 3.6A	1450	1.1-4(三)	2859-3962	901-810	≤ 71
CF4-88 No 4A	1450	1.5-4(单)	3920-5344	1167-1014	≤ 75
CF4-88 No 4A	1450	1.5-4(三)	3920-5344	1167-1014	≤ 75
CF4-88 No 4.5A	1450	3-4(三)	6240-7608	1649-1320	≤ 79
CF4-88 No 5A	1450	4-4(三)	7658-10437	1744-1584	≤ 82
CF4-88 No 5.6A	1450	0.75-4(三)	10758-14664	2187-1987	≤ 86
CF4-88 No 6.3A	1450	15-4(三)	15319-20879	2770-2515	≤ 89
CF4-88 No 7.1A	960	0.75-6(三)	14518-19787	1541-1400	≤ 85



内置型

性能简介 Performance introduction

ZDG (HTFC) 系列低噪声柜式离心风机是本公司引进消化和吸收国内外技术的基础上开发研制的新型风机, 该风机具有消防排烟和通风换气的两用功能, 具有效率高、噪声低、安装方便、运行平衡、流量大、耐高温等特点, 是高层建筑用消防排烟风机更新换代产品, 该机结构紧凑、外形美观、箱体采用型材框架, 箱板拼装设计。箱板采用优质冷轧钢板折弯而成, 为双层复式结构, 内部填充防火保温材料, 以防止高温环境下发生结露现象, 更能有效降噪减振。

ZDG(HTFC) series low noise cabinet type centrifugal fan is a novel fan which has been researched into and developed by our factory on the basis of introducing, digesting absorbing the advanced domestic and overseas technology, It has dual purposes of fire-fighting, ventilation & air-exchange. It has features such as high efficiency, low noise, easy installation, smooth running, large flow, heatresis-tance etc. It is an updating product for the fire-fighting. And exhaust fans in the highrise buildings. It is of compact structure, pleasing appearance. The box adopts the profile framework, box plate assemblage design. The box plate adopts the superior cold-rolled steel plate for bending. It is of double-layer compound structure. The fire-proof insulation materials have been filled in the internal part to avoid dew circumstances in the highly humid environments. As a result, it can more effectively decrease noise and reduce vibration.

ZDG(HTFC) 主要参数 The main technical parameters

机号 Immediately	转速 Speed (r/min)	风量 Air volume (m ³ /h)	全压 Total pressure (Pa)	功率 Power (kw)
9	1000	1880-2500	190-192	0.37
9	1000	2620-3180	191-183	0.55
9	1200	1970-2610	276-287	0.55
9	1200	2780-3410	284-277	0.75
9	1400	2120-2760	368-381	0.75
9	1400	2880-3640	384-380	1.1
9	1600	2320-3000	472-499	1.1
9	1600	3060-3790	500-502	1.5
9	1800	2620-3310	598-632	1.5
9	1800	3560-4630	637-635	2.2
10	900	1950-2610	192-197	0.37
10	900	2760-3500	198-191	0.55
10	1100	2790-3510	291-295	0.75
10	1100	3640-4500	293-280	1.1
10	1300	2710-3650	403-424	1.1
10	1300	3800-4620	426-420	1.5
10	1500	3080-3760	526-548	1.5
10	1500	3920-5640	550-540	2.2
10	1700	3330-4650	669-701	2.2
10	1700	4820-5910	708-698	3
12	700	4470-5320	229-235	0.75
12	700	5750-6880	233-222	1.1
12	800	4780-6180	290-298	1.1
12	800	6320-7450	297-290	1.5
12	950	4980-5860	402-418	1.5
12	950	6030-8280	426-415	2.2
12	1100	5310-7000	530-557	2.2
12	1100	7370-8762	562-563	3
12	1200	6530-8060	650-665	3
12	1200	8130-10260	670-667	4



外置型

ZDG(HTFC) 主要参数 The main technical parameters

机号 Immediately	转速 Speed (r/min)	风量 Air volume (m ³ /h)	全压 Total pressure (Pa)	功率 Power (kw)
15	700	5530-7080	331-354	1.5
15	700	7240-9820	360-376	2.2
15	800	5850-8540	421-464	2.2
15	800	8810-10300	472-485	3
15	900	7360-8280	550-575	3
15	900	8450-12000	622-616	4
15	1000	8636-10250	690-722	4
15	1000	10620-13360	728-758	5.5
15	1100	8863-10950	818-868	5.5
15	1100	11820-14450	886-921	7.5
18	600	9520-12210	336-330	2.2
18	600	12980-15150	328-315	3
18	700	10440-12050	448-450	3
18	700	13130-16070	445-442	4
18	800	10600-13530	568-592	4
18	800	14960-17520	591-580	5.5
18	900	11040-15010	714-746	5.5
18	900	16790-19080	747-740	7.5
18	950	13570-17840	802-817	7.5
18	950	19110-13830	811-783	11
20	550	10980-13630	328-343	2.2
20	550	14940-16520	342-336	3
20	650	13010-16320	460-475	4
20	650	17800-20980	477-461	5.5
20	750	14610-17870	605-625	5.5
20	750	18660-23940	627-623	7.5
20	850	16670-19380	780-801	7.5
20	850	21120-26250	804-797	11
20	900	18170-24330	900-916	11
20	900	25590-30210	902-880	15
22	500	12630-16820	340-359	3
22	500	17770-21830	360-350	4
22	600	16480-21530	494-519	5.5
22	600	23120-27700	516-495	7.5
22	700	18470-22390	675-698	7.5
22	700	23910-31720	702-683	11
22	800	18400-25500	831-897	11
22	800	26130-32400	908-902	15
22	850	24240-29600	988-1012	15
22	850	30820-36000	1016-1000	18.5
25	500	14910-18570	418-432	4
25	500	20840-24950	445-450	5.5
25	550	18540-23130	512-538	5.5
25	550	25190-28410	546-544	7.5
25	600	20670-24890	601-640	7.5
25	600	27540-33380	652-643	11
25	650	21340-31560	705-755	11
25	650	32300-38210	750-748	15
25	700	28890-36670	851-888	15
25	700	38230-46710	882-862	18.5

ZDG(HTFC) 主要参数 The main technical parameters

机号 Immediately	转速 Speed (r/min)	风量 Air volume (m ³ /h)	全压 Total pressure (Pa)	功率 Power (kw)	机号 Immediately	转速 Speed (r/min)	风量 Air volume (m ³ /h)	全压 Total pressure (Pa)	功率 Power (kw)
28	450	27640-33190	462-470	7.5	33	350	25920-32460	355-377	7.5
28	450	36200-43270	469-450	11	33	350	34160-43470	383-389	11
28	500	30050-38530	575-573	11	33	400	26010-35640	458-502	11
28	500	40250-47250	574-553	15	33	400	36850-46280	509-524	15
28	550	34570-43120	688-692	15	33	450	38310-46010	631-649	15
28	550	45740-50900	687-678	18.5	33	450	47280-54030	653-660	18.5
28	600	37870-46290	820-825	18.5	33	500	40080-46470	770-794	22
28	600	48210-51780	825-820	22	33	500	47580-57390	800-816	30
28	650	40350-48970	962-968	22	33	550	52230-60760	946-963	30
28	650	52340-57780	964-952	30	33	550	62340-70310	968-962	37
30	400	26140-32660	421-447	7.5	36	350	28160-35000	391-419	7.5
30	400	34800-44500	449-443	11	36	350	36820-47300	426-432	11
30	450	28240-37660	529-568	11	36	400	28120-38560	495-543	11
30	450	39180-50763	570-552	15	36	400	39800-50000	550-566	15
30	500	33560-40850	667-694	15	36	450	43360-52000	682-701	18.5
30	500	42260-50240	696-697	18.5	36	450	53270-61040	705-712	22
30	550	36170-42820	801-838	18.5	36	500	46130-52960	832-858	22
30	550	44730-52130	840-847	22	36	500	54730-66240	864-881	30
30	580	33150-52670	862-944	22	36	550	60480-70000	1050-1070	37
30	580	54280-61390	950-941	30	36	550	72240-81630	1075-1068	45



A 式



C 式

性能简介 Performance introduction

4-68 型离心通风机可用于一般工厂及大型建筑的室内通风换气。即可用来输送气体，也可以用来输出气体。所输送的气体应为不超过 80℃ 的空气和其他不自燃的对人体无害的、对钢铁材料无腐蚀性的气体。气体内不许含有粘性物质，所含的尘土及硬质颗粒物不大于 150mg/m³。

Model 4-68 Centrifugal ventilator is applicable for the indoor ventilation and rechange in the ordinary factories and large-size architectures. It can be used for both the input gas and output gas. It should be air which does not exceed 80°C and other non-hypergolic gas non-adhesive substances also. It containing dust and hard particle should not be larger than 150mg/m³.

4-68 型主要参数 The main technical parameters

机号 Immediately	转速 Speed (r/min)	配用电机 With motor (kw-p)	流量 Traffic (m ³ /h)	全压 Total pressure (Pa)
2.8A	2900	1.1-2	1131-2262	971-657
2.8A	1450	0.55-4	565-1131	245-167
3.15A	2900	1.5-2	1825-3435	1246-853
3.15A	1450	0.55-4	912-1718	314-216
3.55A	2900	3-2	2708-5013	1608-1108
3.55A	1450	0.55-4	1354-2507	402-275
4A	2900	4-2	3984-7281	2069-1432
4A	1450	0.75-4	1992-3641	520-353
4.5A	2900	7.5-2	5790-10485	2658-1834
4.5A	1450	1.1-4	2895-5242	667-461
5A	2900	15-2	8050-14490	3315-2305
5A	1450	2.2-4	8320-14761	824-579
6.3D	1450	5.5-4	4025-7245	1324-922
6.3D	960	2.2-6	5508-9773	579-402
8D	1450	18.5-4	17585-30774	2158-1501
8D	960	5.5-6	11643-20375	942-657
10D	1450	55-4	35420-61179	3442-2422
10D	960	18.5-6	23450-40505	1510-1059
10D	730	7.5-8	17832-30801	873-618
12.5D	960	55-6	45800-79111	2354-1657
12.5D	730	22-8	34828-60157	1363-961
6.3C	2240	22-2	12852-22803	3159-2197
6.3C	2000	15-2	11476-20359	2511-1756
6.3C	1800	11-2	10328-18324	2040-1422
6.3C	1400	5.5-4	8032-14251	1236-863
6.3C	1250	4-4	7172-12724	981-687
8C	1800	37-2	21830-38202	3315-2315
8C	1600	30-2	19404-33958	2619-1834
8C	1400	18.5-4	16979-29713	2010-1402
8C	1250	15-4	15159-26528	1599-1118
8C	900	5.5-4	10915-19101	834-579
8C	630	2.2-4	7641-13371	402-284
10C	1250	37-4	30534-52740	2560-1795
10C	1120	30-4	27358-47256	2050-1442
10C	1000	22-4	24427-42192	1638-1147
10C	800	11-4	19541-33754	1049-736
12.5C	1120	75-4	53434-66388	3207-3040
12.5C	900	45-6	42938-74166	2069-1451
12.5C	800	30-6	38168-65926	1638-1147
12.5C	710	22-6	33874-58509	1285-902
12.5C	560	11-6	26717-46148	804-559
12.5C	400	4-6	19084-332963	412-284

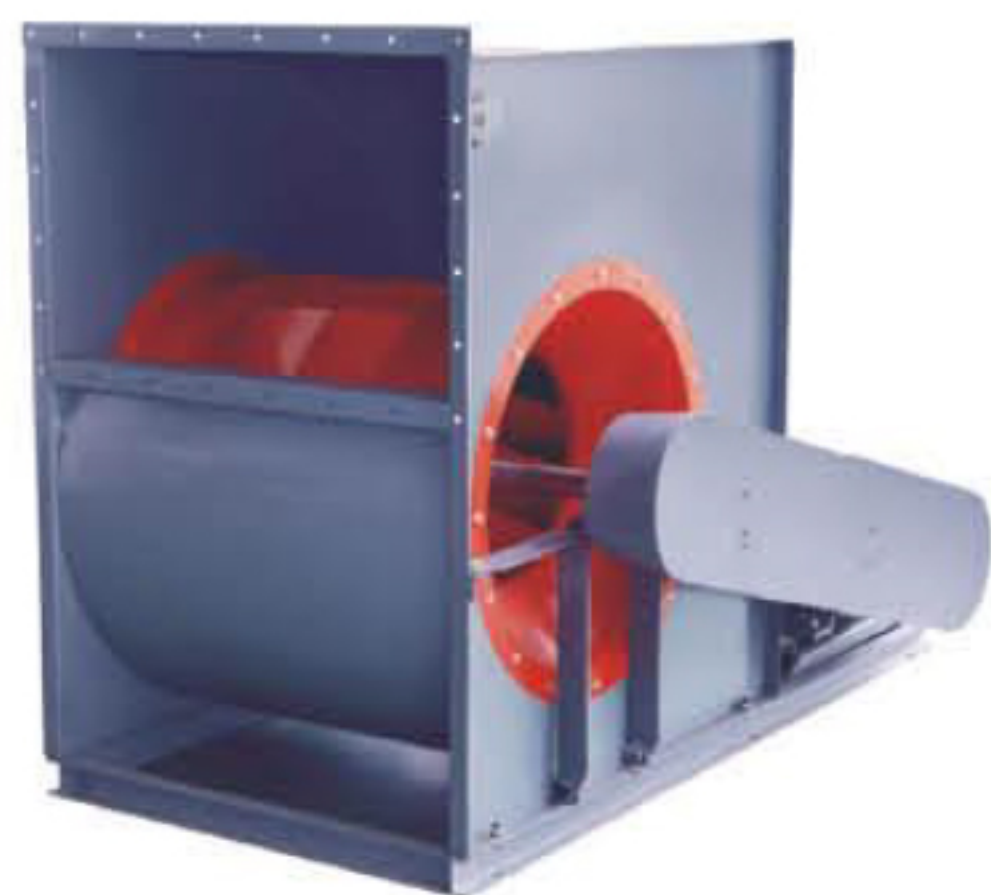
ZDG(HTFC)-II 系列低噪声柜式离心通风机
Series of low noise cabinet type centrifugal fan

ZDG(HTFC)-II 主要参数 The main technical parameters

机号 Immediately	组号 Group	转速 Speed (r/min)	风量 Air volume (m ³ /h)	全压 Total pressure (Pa)	功率 Power (kw)
12	1	1100	5310-8762	530-563	2.8/2.2
12	1	730	4585-7186	253-241	2.8/2.2
12	2	1200	6530-10260	650-667	4/3
12	2	800	4780-7450	290-290	4/3
15	1	900	7360-12000	550-616	4/3
15	1	600	4740-8417	246-276	4/3
15	2	1000	8636-13360	690-758	5.5/4
15	2	670	5420-9470	308-345	5.5/4
18	1	800	10600-17520	568-580	5.5/4
18	1	530	8409-13332	256-246	5.5/4
18	2	900	11040-19080	714-740	8/6.5
18	2	600	9520-15150	336-315	8/6.5
20	1	750	14610-23940	605-623	8/6.5
20	1	500	9990-14868	271-270	8/6.5
20	2	850	16670-26250	780-797	11/9
20	2	560	11180-16820	340-339	11/9

ZDG(HTFC)-II 主要参数 The main technical parameters

机号 Immediately	组号 Group	转速 Speed (r/min)	风量 Air volume (m ³ /h)	全压 Total pressure (Pa)	功率 Power (kw)
22	1	700	18470-31720	675-683	11/9
22	1	460	11620-20085	278-289	11/9
22	2	800	18400-32400	831-902	14/11
22	2	530	13388-23140	392-399	14/11
25	1	650	21340-38210	705-748	14/11
25	1	430	12823-20958	289-338	14/11
25	2	700	28890-46710	851-862	16/13
25	2	470	14000-23453	351-387	16/13
28	1	600	37870-51780	820-820	22/18.5
28	1	400	24323-38077	360-351	22/18.5
28	2	650	40350-57780	962-952	28/22
28	2	430	26258-41107	412-404	28/22
30	1	550	36170-52130	801-847	22/18.5
30	1	370	24180-41163	362-370	22/18.5
30	2	580	33150-61390	862-941	28/22
30	2	390	25486-43388	402-424	28/22



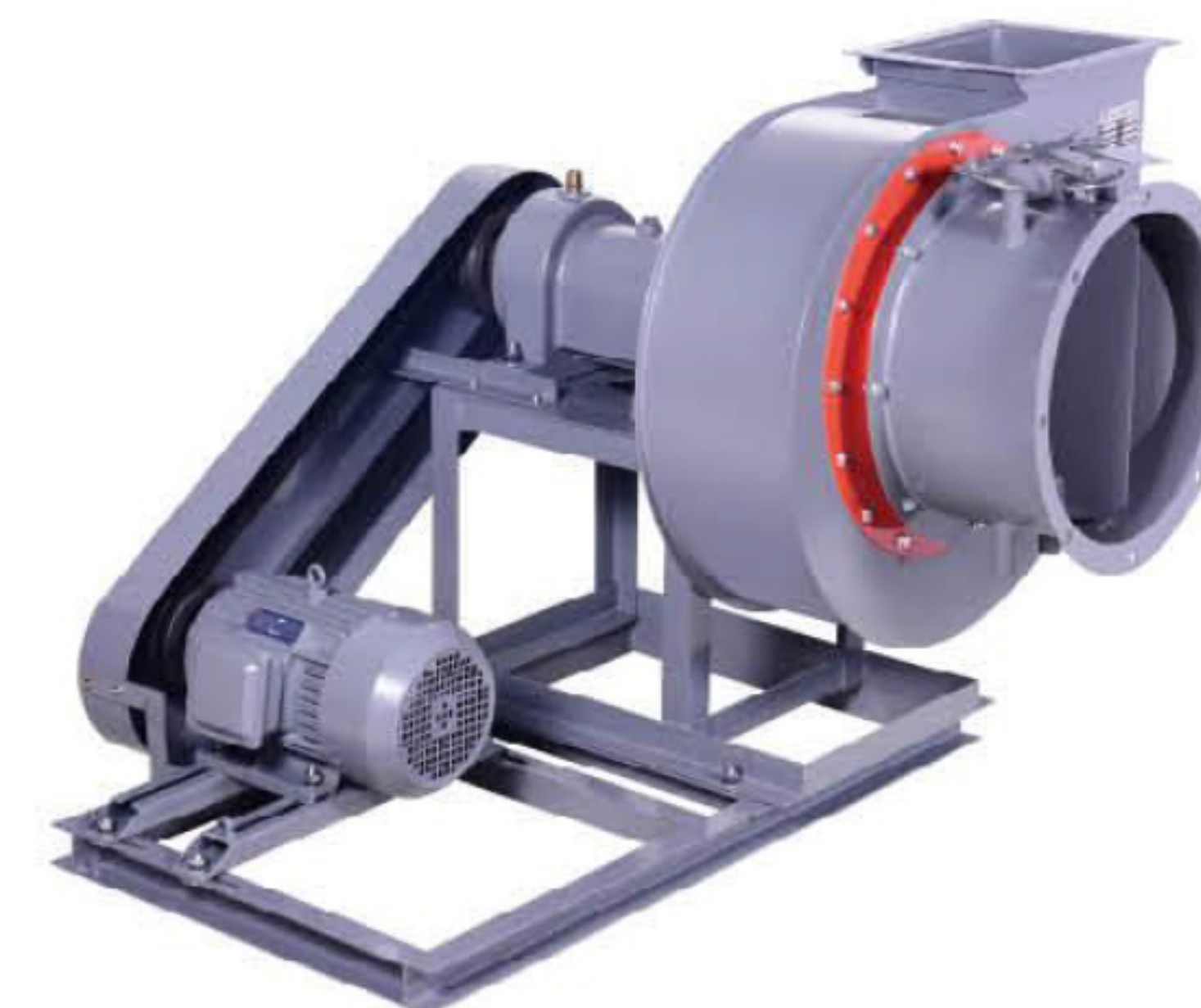
性能简介 Performance introduction

KDF5-58E 型离心式通风机，是引进意大利的 RZ 和德国的 KKT 等国外先进风机技术基础上重新开发而成的，经测试鉴定，达到国内领先水平，该风机具有效率高、风量大、噪声低、曲线平坦等特点、是代替进口空调净化设备的理想配套风机。

Model KDF5-58E Centrifugal ventilator has been re-developed on the basis of the introduction of the advanced fan technology such as Italian RZ, German KKT etc. It proves to reach the leading domestic level by testing and appraisal it has features such as high efficiency, large air volume, low noise smooth curve etc it is an ideal conveying fan to replace for the imported air-conditioner purifier purification equipments.

KDF5-58E 主要参数 The main technical parameters

机号 Immediately	转速 Speed (r/min)	配用电机 With motor (kw-p)	流量 Traffic (m³/h)	全压 Total pressure (Pa)
2.5	4400	4.0-2	2376-5630	2318-1381
2.5	3600	2.2-2	1944-4606	1552-924
2.5	2800	1.1-2	1512-3583	939-559
2.5	2000	0.55-4	1080-2559	479-285
2.8	3900	5.5-2	3087-6953	2277-1338
2.8	3200	3.0-2	2533-5705	1533-901
2.8	2400	1.5-2	1899-4279	862-506
2.8	1800	0.55-2	1424-3209	485-285
3.15	3500	7.5-2	3946-8968	2284-1387
3.15	2800	3-2	3137-7175	1463-887
3.15	2000	1.5-4	2255-5125	746-453
3.15	1600	0.75-4	1864-4100	477-289
3.55	3100	7.5-2	4870-11237	2255-1342
3.55	2400	3-2	3770-8700	1352-804
3.55	1800	1.5-4	2827-6525	760-452
3.55	1400	0.75-4	2199-5075	460-273
4	2700	11-2	6328-14512	2380-1395
4	2000	4.0-4	4687-10750	1306-765
4	1600	2.2-4	3750-8600	836-490
4	1200	1.1-4	2812-6450	470-275
4.5	2500	15-2	8214-19196	2551-1530
4.5	1800	5.5-4	5914-13821	1322-793
4.5	1400	3-4	4600-10753	800-480
4.5	1100	1.5-4	3614-8446	493-296
5	2000	11-4	9375-14333	2027-1736
5	1600	7.5-4	7500-17333	1297-776
5	1200	3.0-4	5625-13000	730-437
5	900	1.5-4	4218-9750	410-245
5.6	1800	15-4	11827-18225	2212-1788
5.6	1400	7.5-4	9199-21233	1283-746
5.6	1000	3.0-4	6571-15167	655-381
5.6	750	1.5-6	4928-11375	368-214
6.3	1500	15-4	14166-26666	1825-1330
6.3	1200	11-4	11333-25760	1168-695
6.3	900	4.0-6	8500-19320	657-391
6.3	700	2.2-6	6611-15026	397-236
7.1	1500	30-4	19791-48833	2322-1361
7.1	1200	15-4	15833-36000	1486-871
7.1	900	7.5-6	11875-27500	836-490
7.1	700	3.0-6	9236-21388	505-296
8	1300	30-4	24375-37781	2183-1890
8	1000	15-4	18750-42856	1292-782
8	800	7.5-4	15000-31583	827-537
8	600	4.0-6	11250-25713	465-281
9	1150	37-4	30187-46718	2130-1851
9	1000	30-4	26250-61250	1610-959
9	800	15-6	21000-49000	1031-614
9	600	7.5-6	15750-36750	579-345
10	1000	45-4	36666-57141	2052-1758
10	800	30-6	29333-68333	1313-776
10	600	11-6	22000-51250	739-437
10	500	7.5-6	18333-42708	513-303
11.2	900	55-6	26362-72251	2084-1786
11.2	800	45-6	41210-96002	1646-974
11.2	600	22-6	30908-72002	1172-693
11.2	450	7.5-6	23180-54000	521-308
12.5	800	75-6	57291-133463	2051-1212
12.5	700	45-6	50130-78122	1570-1345
12.5	550	30-6	39387-91755	969-572
12.5	400	11-6	28645-66730	512-303



性能简介 Performance introduction

Y5-47 型锅炉离心式引风机具有噪声低、结构简单、灵活调节风量、风向的特点，适用于燃用各种煤质并配有消烟除尘装置的工业锅炉。输送气体温度 ≤ 250℃。该风机传动方式有 C 式和 D 式两种，带水冷整体轴承座和风量调节门。如选用减振器，用户可直接将风机放置在水泥地平面上，而无需地脚螺栓，易于安装调试。

Model Y5-47 Efficient & low noise boiler centrifugal induced draught fan has the features such as low noise, simple structure, flexible regulation of the air volume and wind direction etc. It is applicable for various coal combustion. The industrial boiler is equipped with fume-extraction & dust collection device. The conveying gate temperature ≤ 250℃. The drive means of this fan has C-type and D-type two kinds with water-cooled integral bearing base and air volume regulating door. If a de-oscillator is chosen, the user can directly place the fan in the concrete plane. It is easy to install and debug with no need for the anchor bolt.

Y5-47 主要参数 The main technical parameters

机号 Immediately	转速 Speed (r/min)	配用电机 With motor (kw-p)	流量 Traffic (m³/h)	全压 Total pressure (Pa)
3.15C	3250	1.5-2	1323-2496	1049-716
3.15C	2990	1.5-2	1218-2297	883-608
3.15C	2750	1.5-2	1120-2112	745-520
4C	2900	3-2	2417-4561	1481-1079
4C	3300	4-2	2751-5190	1922-1393
5C	2620	5.5-2	4267-8048	1893-1373
5C	2900	7.5-2	4723-8909	2324-1687
6C	2620	15-2	7372-13908	2844-2069
6C	2850	18.5-2	8020-15129	3364-2452
7C	2580	30-2	11529-21747	3756-2746
7C	2200	18.5-4	9830-18545	2736-1991
8C	2020	30-4	13474-25417	3001-2187
8C	1860	22-4	12407-23404	2550-1853
9C	1800	37-4	17095-32247	3020-2197
10D	1480	37-4	19281-31551	2697-2246
12D	1480	75-4	33318-50356	3628-3393

Y9-38 系列锅炉离心引风机 Series boiler centrifugal fan



性能简介 Performance introduction

本风机适用于配有省煤器(预热器)和消烟器尘埃装置的0.5-35t/h工业锅炉选用。凡进气条件相近,性能又适应者均可选用,但最高进气温度应不得超过250℃在引风机前必须加装除尘效率不低于85%的除尘装置,以降低进入风机的烟气含尘量,不但减少了烟气对环境的污染,而且降低了烟尘对风机的磨损,有利于提高风机的使用寿命。

It is designed to fit the equipment of 0.5-35t/h industries boiler which equipped with preheater and dust-removal fixture, suitable for the industrial boiler with the similar suction condition and the compatible performance. But the temperature of air must be below 250℃. Before installation, the fan must equipped with the dust-removal fixture whose dust removing efficiency shall not beneath 85%. With access to lower the amount of dust in the flue gas, the fan will reduce environmental pollution. Moreover, it can reduce wear so as to enhance the service life of the fan.

Y9-38 主要参数 The main technical parameters

机号 Immediately	转速 Speed (r/min)	风量 Air volume (m ³ /h)	全压 Total pressure (Pa)	功率 Power (kw)
4D	2900	3297-4396	2275-2334	5.5
4D	2900	4945-5495	2294-2226	7.5
4.5D	2900	4694-7824	2873-2814	11
5D	2900	6439-7513	3550-2648	15
5D	2900	8586-10733	3658-3481	18.5
5.6D	2900	9047-12063	4452-4579	30
5.6D	2900	13571-15079	4511-4364	37
6.3D	1450	6441-7514	1402-1441	5.5
6.3D	1450	8588-10735	1451-1372	7.5
6.3D	2900	12882-15029	5639-5786	45
6.3D	2900	17176-19323	5805-5707	55
6.3D	1450	21470	5521	75
7.1D	1450	9219-12292	1784-1873	11
7.1D	1450	13829-16902	1863-1794	15
7.1D	1450	18439	1735	18.5
8D	1450	13189-19783	2275-2363	22
8D	1450	21982-26379	2334-2206	30
9	1450	18778-25038	2873-3010	37
9D	1450	28168-37557	2991-2785	55
10D	1450	25760-30053	3550-3687	55
10D	1450	34346-42933	3716-3648	75
10D	1450	47226-51519	3569-3442	90
11.2D	1450	36190-48254	4462-4658	110
11.2D	1450	54285-60317	4462-4570	132
11.2D	1450	66349-72381	4471-4324	160
11.2D	960	23960-31947	1951-2039	30
11.2D	960	35941-47921	2030-1892	45
12.5D	1450	50312-58697	5560-5766	160
12.5D	1450	67082	5805	200
12.5D	1450	75468-83853	5766-5697	250
12.5D	1450	92238-100624	5580-5384	315
12.5D	960	33310-44413	2432-2540	55
12.5D	930	49965-61068	2530-2441	75
12.5D	960	66620	2353	90
12.5D	730	25330-29550	1402-1461	22
12.5D	730	33772-42215	1471-1441	30
12.5D	730	46437-50659	1412-1363	37
14D	960	46798	6049	75
14D	960	54597	3167	90
14D	960	62397-70197	3187-3167	110
14D	960	77997-85796	3128-3059	132
14D	960	93596	2961	160
14D	730	35586-41517	1765-1833	37
14D	730	47448-53379	1843-1833	45
14D	730	59310	1814	55
14D	730	65241-71172	1775-1716	75

Y8-39 系列锅炉离心引风机 Series boiler centrifugal fan



性能简介 Performance introduction

适用于配有消烟除尘装置的0.5-35t/h工业锅炉,输送气体最高温度不得超过250℃,在引风机前必须加装效率不低于85%的除尘装置,超过250℃的可提供不锈钢材质的高温引风机。

It is suitable for making up the fanning and blowing system of the industries boiler beneath 0.5-35t/h. The highest temperature of air shall not exceed 250℃. Before installation, the fan must equipped with the dust-removal fixture whose dust removing efficiency shall not beneath 85%. Our company can provide the stainless steel boiler central blower, when the temperature of air must exceed 250℃.

Y8-39D 主要参数 The main technical parameters

机号 Immediately	转速 Speed (r/min)	流量 Traffic (m ³ /h)	全压 Total pressure (Pa)	功率 Power (kw)
4D	2900	3242-3846	2039-2049	4
4D	2900	4451-5660	2030-1882	5.5
4.5D	2900	4613-5477	2579-2589	7.5
4.5D	2900	6338-8059	2569-2392	11
5D	2900	6332	3187	11
5D	2900	7513-8693	3197-3167	15
5D	2900	9874-11055	3079-2951	18.5
5.6D	2900	8896	4001	18.5
5.6D	2900	10555	4011	22
5.6D	2900	12214-15531	3971-3707	30
6.3D	1450	6333-8695	1265-1255	5.5
6.3D	1450	9876-11057	1216-1167	7.5
6.3D	2900	12667-15029	5060-5080	37
6.3D	2900	17391-22114	5031-4687	55
7.1D	1450	9066-14136	1847-1608	11
7.1D	1450	15827-19207	1539-1333	15
8D	1450	12969-17805	2088-2098	18.5
8D	1450	20223-22641	2039-1951	22
8D	1450	25059-27477	1833-1696	30
9D	1450	18465-21908	2647-2716	30
9D	1450	25351-28794	2657-2579	37
9D	1450	32237-39122	2471-2147	45
10D	1450	25330-34775	3265-3422	55
10D	1450	39498-44221	3344-3246	75
10D	1450	48943-53666	3180-2922	90
11.2D	1450	95587-42222	4099-4275	90
11.2D	1450	48857-55492	4295-4197	110
11.2D	1450	62127-68752	4070-3903	132
11.2D	1450	75395	3667	160
11.2D	960	23561-32346	1794-1882	30
11.2D	960	36739-41132	1833-1784	37
11.2D	960	45525-49918	1706-1608	45
12.5D	1450	49473	5109	132
12.5D	1450	58697	5325	160
12.5D	1450	67921-77145	5344-5227	200
12.5D	1450	86369-104816	5070-4570	250
12.5D	960	32754-38861	2235-2334	45
12.5D	960	44968-51075	2343-2285	55
12.5D	960	57182-69635	2226-2000	75
12.5D	730	24097-34194	1294-1353	22
12.5D	730	38838-52769	1323-1157	30
14D	960	46018-54597	2804-2932	75
14D	960	63177	2942	90
14D	960	71757-80336	2873-2785	110
14D	960	88916-97496	2667-2510	132
14D	730	34993-48041	1618-1706	37
14D	730	54565	1657	45
14D	730	61089-74137	1608-1451	55

性能简介 Performance introduction

HTF 系列消防高温排烟专用风机是经优化设计研制开发的新产品。它具有功率高，曲线平坦的特点，有利于节能。该机采用电动机直联传动，可以根据高级民用建筑的不同要求、采用单速驱动形式，达到通风排风和消防使用时高温排烟的目的。

广泛适用于高级民用建筑，烘箱，地下车库，隧道等场所。

HTF series fire control high-temperature air blower is after the optimized design development new product. It has effectively leads high, the curve smooth characteristic, is advantageous to the energy conservation. This machine uses the electric motor straight association transmission, may act according to the high-level civil construction The different request, uses the list fast actuation form, achieved ventilates a row of wind and when the fire use fire use the high temperature discharges fume goal. Widespread is suitable.

Uses in the high-level civil construction, the drying oven, underground garage, situation and so on tunnel.



HTF-I 主要参数 The main technical parameters

机号 Immediately	配用电机 With motor (kw-p)	转速 Speed (r/min)	风量 Air volume (m³/h)	全压 Total pressure (Pa)	噪声 Noise dB(A)
3.5	0.75	2900	4225-3350	280-420	≤ 78
4	1.5	2900	5500-3800	300-450	≤ 79
4.5	2.2	2900	8500-6210	410-670	≤ 84
5	3	2900	9824-6817	510-752	≤ 86
5.5	4	2900	15200-10900	398-621	≤ 86
6	5.5	2900	16090-13197	510-760	≤ 86
6.5	5.5	1450	21500-15300	425-680	≤ 88
7	7.5	1450	24380-18908	610-728	≤ 88
8	7.5	1450	31421-26012	600-723	≤ 89
9	11	1450	33510-27613	562-840	≤ 89
10	11	1450	45697-35000	630-770	≤ 90
11	15	1450	51552-48500	580-690	≤ 92
12	18.5	960	62763-55651	624-740	≤ 93
13	18.5	960	74708-56031	600-807	≤ 94
15	22	960	93800-76041	623-819	≤ 95

HTF-II 主要参数 The main technical parameters

机号 Immediately	配用电机 With motor (kw-p)	转速 Speed (r/min)	风量 Air volume (m³/h)	全压 Total pressure (Pa)	噪声 Noise dB(A)
5	3/2.5	2900	9824-6817	510-752	≤ 80
5	3/2.5	1450	4912-3410	127-188	≤ 75
5.5	4/3.3	2900	15200-10900	398-621	≤ 86
5.5	4/3.3	1450	7600-5450	100-155	≤ 75
6	5.5/4.5	2900	16090-13197	510-760	≤ 86
6	5.5/4.5	1450	8045-6599	127-190	≤ 75
6.5	5.5/4	1450	21500-15300	425-680	≤ 88
6.5	5.5/4	960	14235-10130	187-298	≤ 80
7	8/6.5	1450	24380-18908	610-728	≤ 88
7	8/6.5	960	16141-12518	267-319	≤ 80
8	8/6.5	1450	31421-26012	600-723	≤ 89
8	8/6.5	960	20800-17222	263-317	≤ 80
9	11/9	1450	33510-27513	562-840	≤ 90
9	11/9	960	22186-18216	246-368	≤ 81
10	11/9	1450	45679-35000	630-770	≤ 90
10	11/9	960	30255-24019	276-338	≤ 80
11	16/13	1450	51552-48500	580-690	≤ 92
11	16/13	960	38664-36375	326-387	≤ 83
12	17/8	960	62763-55651	624-740	≤ 93
12	17/8	720	47072-43311	351-416	≤ 84
13	17/8	960	74708-56031	600-807	≤ 94
13	17/8	720	56031-42023	338-454	≤ 84
15	22/11	960	93800-76041	623-819	≤ 95
15	22/11	720	70350-57031	350-461	≤ 85

性能简介 Performance introduction

SWF-I 型混流式通风是一种介于轴流风机和离心风机之间且兼二者之长的新型风机。其风压比同机号轴流风机高，其流量比同机号离心风机大，具有高效区宽，效率高等优点。该风机广泛用于写字楼、宾馆及其他大型高级民用建筑的通风排风系统，也可用于冷库纺织等工矿企业的通风换气，以代替低压离心风机和高压轴流风机而无须加装大量的消声设施。

Model SWF-I mixed-flow ventilator is a novel and intermediate fan between axial-flow fan and centrifugal fan. It absorbs the advantages from both fans. Its wind pressure is higher than the same machine number a axial-flow larger than the same machine number centrifugal fan. It has the advantages such as wide and effective operational zone, high efficiency etc. This fan is widely applicable for the ventilation and exhaust system in the office building, hotel large-size high grade civil purpose architect-enterprises such as freezing house, ventilation and air-exchange in the minning and industr a enterprises such as freezing house. Testile and soon in order to replace for the low-pressure centrifugal fan or high-pressure Axial-flow with no need to install large amounts of the noise blanking facilities.



SWF 主要参数 The main technical parameters

机号 Immediately	转速 Speed (r/min)	风量 Air volume (m³/h)	风压 Wind pressure (Pa)	电机功率 Motor power (Kw)
3	2900	4652-3212	512-883	2.2
3	1450	2312-1606	121-236	0.25
3	960	1512-1000	67-139	0.18
3.5	2900	5745-4127	564-986	3
3.5	1450	3320-2130	125-257	0.25
3.5	960	1938-1234	76-146	0.18
4	2900	6801-5688	710-950	4
4	1450	4302-3053	143-212	0.37
4	960	2642-1743	86-156	0.25
4.5	2900	8731-7561	720-960	5.5
4.5	1450	4552-3392	207-265	0.55
4.5	960	3595-2240	88-162	0.25
5	2900	13110-11342	750-960	5.5
5	1450	7433-5252	220-623	1.1
5	960	5624-3215	96-182	0.37
5.5	2900	16820-12264	760-950	7.5
5.5	1450	9126-7431	258-354	1.5
5.5	960	6532-4893	119-175	0.55
6	2900	19230-17210	780-960	7.5
6	1450	10000-8121	200-326	1.5
6	960	8025-4986	128-236	0.75
6.5	1450	25124-21864	520-950	7.5
6.5	1450	15064-10840	282-382	2.2
6.5	960	10544-7588	155-215	0.75
7	1450	31380-27330	600-980	11

机号 Immediately	转速 Speed (r/min)	风量 Air volume (m³/h)	风压 Wind pressure (Pa)	电机功率 Motor power (Kw)
7	1450	18800-11780	329-470	3
7	960	12050-7799	124-206	1.1
7.5	1450	30672-25518	710-1050	11
7.5	1450	22538-16260	378-504	4
7.5	960	15776-11382	208-278	1.5
8	1450	37350-33210	800-1000	15
8	1450	41256-28148	560-872	11
8	960	25467-18636	193-382	4
8	720	19185-11528	116-272	1.5
9	1450	46138-37310	780-1000	18.5
9	960	34206-27174	282-430	5.5
9	720	25654-18342	164-288	2.2
10	1450	51821-45032	780-1000	18.5
10	1450	66541-55758	704-804	22
10	960	44054-36916	228-371	7.5
10	720	33041-24198	167-248	3
11	1450	73601-53530	709-1000	22
11	960	48729-43572	310-370	11
11	720	36548-29411	181-248	4
12	960	68358-62058	800-1100	22
12	960	85723-76031	763-886	30
12	720	64292-57226	429-498	11
13	960	84386-76280	880-1120	30
13	960	95420-84933	785-904	30
13	720	71565-63699	441-508	15

HL3-2A 型高效低噪声混流风机

High temperature & Firefighting & Exhaust smoke mixed flow ventilator

PYHL-14 型高温消防排烟混流风机
 PYHL-14 High temperature & Firefighting & Exhaust smoke mixed flow ventilator



性能简介 Performance introduction

HL3-2A/PYHL-14 型风机应用子午加速方法和“准三元”流动理论设计，采用直线形外筒、锥形轮毂、扭曲翼形叶片、进风口加置集流器或弧形消音器的结构形式。压力较同机号轴流风机高，风量较同机号离心风机大。具有效率高、结构紧凑、噪声低、体积小、安装方便等优点，广泛适用于宾馆、饭店、商场、写字楼、体育馆等高级民用建筑的通排风、管道加压送风及工矿企业的通风换气场所。

The HL3-2A/PYHL-14 air blower application midline and noon acceleration method and "quasi-triangular" flow theoretical design, uses the straight line the shape outer sleeve the awl wheel hub, the distortion wing form leafblade, stomata for air sets at the current collector or thearc damper structure Form. The pressure compares the same serial number axis custom shanded down form past generation machine htgh, the amount of wind compares the same serial number centrifugalism air blower to be big. Has the efficiency tobe high. The structure compact, the noise low, the volume is small, merit and so on installment convenience, widely is suit-able for the guesthouse, the hotel, business The field, the office, the stadium and so on the high-level civil construction passes a row of wind, the pipeline pressurizes the blast and the industry and mining enterprise Well ventilated takes a breath the place.

HL3-2A/PYHL-14 主要参数 The main technical parameters

机号 Immediately	转速 Speed (r/min)	风量 Air volume (m³/h)	全压 Total pressure (Pa)	功率 Power (kw)	噪声 Noise dB(A)
2.5	2900	2253-1340	402-554	0.75-2	73
2.5	1450	1126-670	100-139	0.55-4	64
2.5	960	746-444	44-61	0.37-6	58
3.0	2900	3893-2316	578-798	1.1-2	74
3.0	1450	1946-1158	145-200	0.55-4	65
3.0	960	1289-767	63-87	0.37-6	59
3.5	2900	6181-3678	787-1086	2.2-2	75
3.5	1450	3091-1839	197-272	0.55-4	66
3.5	960	2046-1217	86-119	0.37-6	60
4.0	2900	9227-5490	1028-1419	5.5-2	79
4.0	1450	4614-2745	257-355	0.75-4	67
4.0	960	3055-1817	112-156	0.55-6	61
4.5	2900	13138-7816	1301-1796	7.5-2	80
4.5	1450	6569-3908	325-449	1.1-4	68
4.5	960	4349-2586	143-196	0.55-6	62
5.0	2900	18022-10722	1606-2217	15-2	85
5.0	1450	9091-5361	402-554	2.2-4	69
5.0	960	5966-3549	176-243	0.75-6	63
5.5	1450	11993-7136	486-670	3.0-4	70
5.5	960	7941-4724	213-294	1.1-6	65
5.5	720	5955-3543	120-165	0.75-8	63
6.0	1450	15571-9264	578-798	5.5-4	72
6.0	960	10309-6133	253-350	1.5-6	66
6.0	720	7732-4600	142-197	1.1-8	64
6.5	1450	19797-11778	679-937	7.5-4	74
6.5	960	13107-7798	298-411	2.2-6	69
6.5	720	9830-5849	167-231	1.1-8	65
7.0	1450	24726-14710	787-1086	11-4	77
7.0	960	16370-9340	345-476	3-6	70
7.0	720	12278-7305	194-268	1.5-8	66
7.5	1450	30411-18094	904-1247	15-4	80
7.5	960	20135-11979	396-547	4-6	72
7.5	720	15010-8984	223-308	1.5-8	67
8.0	1450	36908-21959	1028-1419	18.5-4	82
8.0	960	24436-14538	451-622	5.5-6	74
8.0	720	18327-10904	253-350	2.2-8	71

HL3-2A 型高效低噪声混流风机

High temperature & Firefighting & Exhaust smoke mixed flow ventilator

PYHL-14 型高温消防排烟混流风机
 PYHL-14 High temperature & Firefighting & Exhaust smoke mixed flow ventilator

HL3-2A/PYHL-14 主要参数 The main technical parameters

机号 Immediately	转速 Speed (r/min)	风量 Air volume (m³/h)	全压 Total pressure (Pa)	功率 Power (kw)	噪声 Noise dB(A)
8.5	1450	44270-26339	1161-1602	22-4	86
8.5	960	29310-17438	509-702	7.5-6	77
8.5	720	21983-13079	286-395	3.0-8	73
9.0	1450	52551-31266	1301-1795	30-4	90
9.0	960	31793-20700	570-787	11-6	80
9.0	720	26094-14789	320-443	4-8	75
9.5	960	40920-24344	634-877	11-6	82
9.5	720	30690-18258	357-494	5.5-8	76
10	960	47726-28395	704-972	15-6	85
10	720	35795-21296	396-547	7.5-8	77
10.5	960	55250-32869	775-1071	18.5-6	87
10.5	720	41437-24651	436-602	11-8	79
11.0	960	63524-37792	851-1176	22-6	89
11.0	720	47643-28344	478-661	11-8	82
11.5	960	72587-43183	930-1285	30-6	92
11.5	720	54440-32387	523-723	15-8	84
12.0	960	82472-49064	1013-1399	37-6	95
12.0	720	61854-36798	570-787	15-8	86
12.5	960	93217-55456	1099-1518	45-6	99
12.5	720	69912-41592	618-854	18.5-8	88
13.0	720	78642-47685	668-923	22-8	90
13.0	560	61166-36388	404-558	11-10	81
13.5	720	88070-52394	721-996	30-8	92
13.5	560	68498-40751	436-602	15-10	82

6-30 系列谷物、粉末输送离心风机

Series grain and powder Transmission fan



性能简介 Performance introduction

6-30 型离心通风机排送的介质为空气及无腐蚀性、不自燃、不含有粘性物质气体，其温度不超过 80℃。该风机具有压力较高、流量较小的特性，适于粮食棉花等加工时的风力输送。

This medium ejected by 6-30 Centrifugal fanner is air and other gas with non-corrosiveness. Non self-ignition and non adhesivemeters within temperature of 80℃. The kind of fanner has features of high pressure and low flux, which is suitable to wind power transportation of process of foodstuff and cotton.

6-30 主要参数 The main technical parameters

机号 Immediately	转速 Speed (r/min)	配用电机 With motor (kw-p)	流量 Traffic (m³/h)	全压 Total pressure (Pa)
5	2900	7.5-2	2240-4776	4395-3218
6	2400	11-2	3204-6830	4326-3169
6	2200	7.5-2	2937-6261	3640-2668
6	2000	5.5-2	2670-5962	3012-2207
6	1800	4-4	2403-5123	2443-1785
7	2020	15-2	4282-9129	4178-3058
7	1840	11-2	3900-8316	3459-2538
7	1860	7.5-2	3562-7592	2891-2117
7	1500	5.5-2	3180-6779	2303-1689
9	1800	30-4	8120-14680	5482-4746
9	1800	37-4	15990-17300	4403-4020
9	1645	22-4	7420-12210	4580-4109
9	1645	30-4	13410-15810	3962-3354

HY 型低噪音焊烟吸尘风机 Type low-noise welding-smoke dust-suction fan



性能简介 Performance introduction

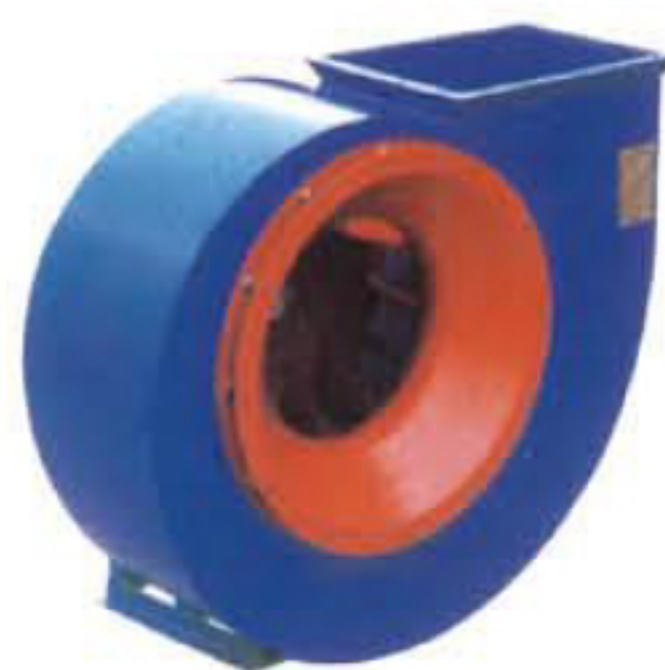
HY 型低噪音焊烟吸尘风机, 是根据行业环保要求, 专业研发的一种新型风机, 该风机具有独特的采用机壳与一体成型设计, 优化进风导流, 增加强度。进风口标配拉铆螺母, 方便用户法兰对接, 风机具有风量、吸力强、噪音低等特点。广泛应用于焊接烟气净化配套设备, 环保除尘设备。

HY type low-noise welding-smoke dust-suction fan is a new type of fan which is produced according to the environmental protection requirements of industry. The fan has the unique integrated design of shell and inlet, and it optimizes the inlet and diversion, and enhances the intensity. The inlet is equipped with the riveting nut, which is convenient for the abutment of flanges. The fan has the characteristics of large air volume, strong suction, low noise and so on. It is widely applied in welding-smoke purification equipment and environmental protection dedusting equipment.

HY 型主要参数 The main technical parameters

型号 Model	电压 Voltage (V)	电机功率 Motor power (kw-p)	频率 Frequency (Hz)	转速 Speed (r/min)	流量 Traffic (m ³ /h)	全压 Total pressure (Pa)
HY-2	220/380	1.1	50	2800	1900-2700	1380-1240
HY-2.3	220/380	1.5	50	2800	2600-3500	1580-1390
HY-2.5-I	220/380	2.2	50	2800	4200-5000	1820-1640
HY-2.5-II	380	3	50	2800	4800-5500	2050-1860

5-69 I 式高效、除尘、排气、II 式方形排烟排油厨房专用 Centrifugal fan



I 式 (I type)



II 式 (II type)

性能简介 Performance introduction

5-69 离心式通风机根据用户需求, 使用更加方便并有多项选择而自行研制而成, 该系列产品不但其流量、压力大于同类型的产品, 还克服了多翼风机在排尘、排油烟不易清洗等特点。该风机结构上分为 I、II 两种。I 型为蜗壳型、II 型为方形, 蜗壳形轻巧, 适用于一般场合通风换气; 方形稳固性好, 便于安装, 适用于厨房排油烟。

5-69 Centrifugal ventilator is self-developed according to the user demand with the more convenience and choices, the series products not only have the flow rate and pressure over the similar products, but also overcome the shortcomings of multi-blade blower, such as difficulty to remove dust, exhaust oil & fume, clean. The structure of blower is classified into type I and II, type I is volute type, type II is square, the volute type is light and applicable for the general ventilation; the square type is stable and easy to install, which is applicable to exhaust the oil & fume from the kitchen.

5-69 主要参数 The main technical parameters

机号 Immediately	转速 Speed (r/min)	配用电机 With motor (kw-p)	流量 Traffic (m ³ /h)	全压 Total pressure (Pa)	噪声 Noise dB(A)
2.8	2900	2.2-2	4332-1524	700-1307	79
3.2	2900	4-2	6598-2271	1038-1693	81
3.2	1450	0.55-4	3299-1135	260-423	65
3.6	2900	7.5-2	9975-3312	1192-2123	83
3.6	1450	1.1-4	4988-1656	298-530	66
4	2900	11-2	12223-4659	1347-2528	84
4	1450	1.5-4	6111-2329	337-631	71
4.5	2900	18.5-2	18444-6458	1809-3193	89
4.5	1450	3-4	9222-3229	452-798	73
4.5	960	0.75-6	6106-2138	198-350	63
5	1450	4-4	12126-3876	604-994	75
5	960	1.1-6	8028-2565	265-436	66
5.6	1450	7.5-4	16944-5641	662-1207	82
5.6	960	2.2-6	11218-3734	290-529	68
6	1450	11-4	22687-7840	835-1412	81
6	960	3-6	15020-5191	366-619	72
7.1	1450	22-4	36911-12622	1343-2009	83
7.1	960	7.5-6	26236-8357	528-881	74
7.1	720	3-8	19677-6268	297-495	66

XQ I/II 型高压离心通风机 Type high-pressure centrifugal fan



性能简介 Performance introduction

XQ I/II 是水泥行业专用风机, 用于高压强制通风, 并可广泛用于输送物料、输送空气, 介质温度最高不超过 80℃, 介质所含尘土及硬质颗粒不大于 150mg/m³。

XQ I/II Type is the professional fans designed for coercive ventilation in cement industry. The product is widely used to transport materials and gases with the quantity of dust and solid impurities ≤ 150mg/m³ and the temperature no higher than 80℃.

XQ I/II 主要参数 The main technical parameters

机号 Immediately	转速 Speed (r/min)	配用电机 With motor (kw-p)	流量 Traffic (m ³ /h)	全压 Total pressure (Pa)
XQ I 4.8A	2840	0.75-2	232	5028
XQ I 4.8A	2840	1.1-2	325	5269
XQ I 4.8A	2840	1.5-2	418-511	5422-5466
XQ I 4.8A	2840	2.2-2	604-697	5419-5226
XQ I 4.8A	2840	3.0-2	790-883	5082-4828
XQ I 5.4A	2840	1.5-2	330	6363
XQ I 5.4A	2840	2.2-2	463-595	6669-6862
XQ I 5.4A	2840	3.0-2	728-860	6918-6858
XQ I 5.4A	2840	4.0-2	992-1125	6690-6422
XQ I 5.4A	2840	5.5-2	1257	6110
XQ I 4.7A	2840	1.5-2	585	5187
XQ I 4.7A	2840	2.2-2	747-908	5287-5416
XQ I 4.7A	2840	3.0-2	1069-1231	5469-5416
XQ I 4.7A	2840	4.0-2	1392-1554	5351-5187

Y6-30 系列锅炉离心引风机 Series boiler centrifugal fan



性能简介 Performance introduction

本风机配套锅炉使用, 具有高效率, 噪声低特点, 也可以用于介质温度不能超过 250℃, 无腐蚀性及粘性物质的送排风系统。

It is specially designed for boiler using, featured by high efficiency and low noise, the fan is used for ventilation system to transport air without corrosive and adhesive materials. The temperature of the media shall not exceed 250℃.

Y6-30 主要参数 The main technical parameters

机号 Immediately	转速 Speed (r/min)	全压 Total pressure (Pa)	流量 Traffic (m ³ /h)	功率 Power (w)
3.5C	2350	853-727	655-1192	0.75
4.3C	2260	1206-1020	1169-2125	1.5
4.8C	2250	1490-1265	1619-2944	2.2
5.4C	2300	2157-1833	2202-3963	3
6.5C	2150	2383-2288	2926-4000	4
6.5C	2150	2206-2020	4263-4945	5.5
7.5C	1900	2598-2500	5216-6600	7.5
7.5C	1900	2392-2196	7349-8771	11

HG1 型高压旋涡风机

Type high pressure vortex blower



高压旋涡风机技术参数 Technical parameters of high pressure swirl fans

型号	频率 (Hz)	功率 (Kw)	电压 (V)	电流 (A)	最大流量 (m³/h)	最大压力 mbar	最大真空 mbar	转速 r/min	噪声 dB(A)
HG1-1	50/60	0.12/0.15	220	0.6/0.75	40/42	80/90	80/90	2800/3300	45/45
HG1-1	50/60	0.18/0.22	220	0.9/1.1	56/58	90/100	90/100	2800/3300	48/48
HG1-2	50/60	0.37/0.45	220	1.8/2.3	80/90	120/130	110/130	2800/3300	53/56
HG1-2	50/60	0.37/0.45	380	1.1/1.29	80/90	120/130	110/130	2800/3300	53/56
HG1-3	50/60	0.55/0.63	220	2.9/3.2	100/120	120/150	110/130	2800/3300	55/57
HG1-3	50/60	0.55/0.63	380	1.6/1.8	100/120	120/150	110/130	2800/3300	55/57
HG1-4	50/60	0.75/0.85	220	3.9/4.3	145/165	130/150	130/150	2800/3300	56/58
HG1-4	50/60	0.75/0.85	380	2.15/2.43	145/165	130/150	130/150	2800/3300	56/58
HG1-5	50/60	1.1/1.3	220	5.6/6.6	210/225	150/170	150/160	2800/3300	64/66
HG1-5	50/60	1.1/1.3	380	3.15/3.72	210/225	150/170	150/160	2800/3300	64/66
HG1-5	50/60	1.5/1.75	220	8.0/9.0	210/225	200/180	180/180	2800/3300	64/66
HG1-5	50/60	1.5/1.75	380	4.29/5.0	210/225	200/180	180/180	2800/3300	64/66
HG1-6	50/60	2.2/2.55	220	11.0/13.0	265/315	220/230	235/245	2800/3300	69/72
HG1-6	50/60	2.2/2.55	380	6.29/7.29	265/315	220/230	235/245	2800/3300	69/72
HG1-7	50/60	3.0/3.45	380	8.5/10.0	318/376	290/230	270/250	2800/3300	69/72
HG1-8	50/60	4.0/4.6	380	11.4/13.1	530/620	260/280	260/280	2800/3300	70/74
HG1-8	50/60	5.5/6.3	380	15.7/18.0	530/620	300/280	300/300	2800/3300	70/74
HG1-8	50/60	7.5/8.6	380	21.4/24.5	520/620	400/330	400/360	2800/3300	70/74
HG1-9	50/60	11/13	380	31.0/37.0	1050/1250	270/260	280/270	2800/3300	74/79
HG1-9	50/60	15/18	380	42.8/51.4	1050/1250	460/420	340/380	2800/3300	74/79

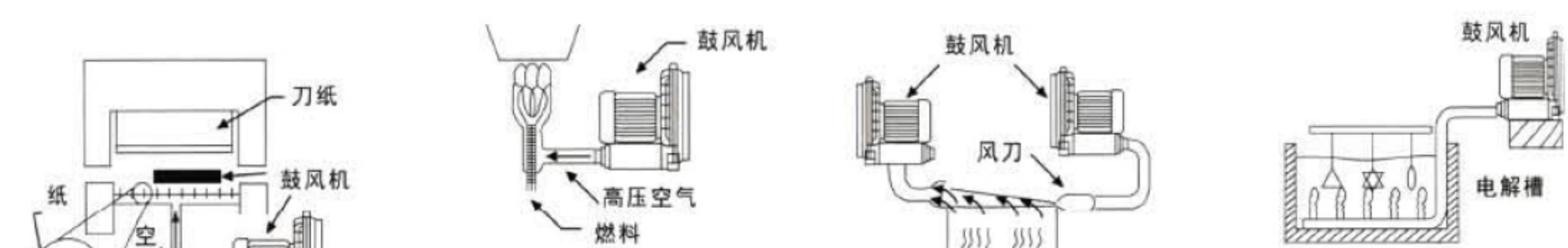
应用实例送风机

Application Examples use for blowing



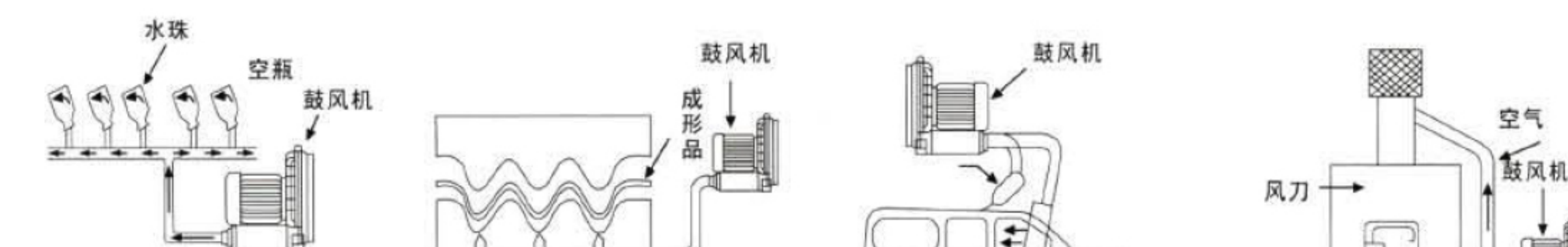
以高压空气吹入畜粪木槽，增加畜粪与空气接触面积，也适于公害污水处理。
洗净后的水分或油气迅速脱离物品。
使印色快速干燥
电子业电路板可利用送风机来吹除微小灰尘及水滴

畜粪发酵曝气 Feedair
洗净后脱水 Blow after cleaning
印刷强制干燥 Dry with forced air for printing
干燥用气刀 Dry with air knife



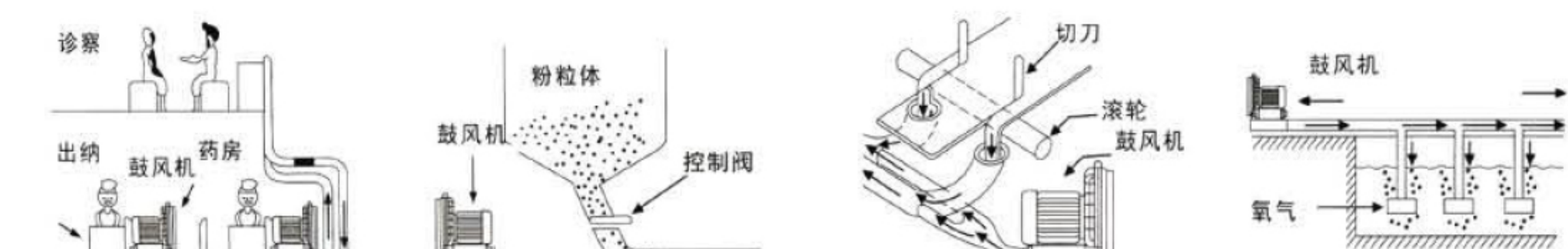
增加浮力，容易移动
高风压 (2,000mmAq) 及足够的风量，减轻您对空气压缩机的依赖。
让散出之烟气迅速排出，以免造成污染。
利用空气来搅动电解槽，使电解质流通，并把附着水泡驱开令电镀迅速，效果均匀。(出口孔以4mm为佳)

裁纸机气垫 Air pad for paper cutter
瓦丝重油喷燃 Gas heavy oil injection
烟气吹吸 Blow and suction smog
电解液搅拌 Mix electrolyte



饮料空瓶水洗后将水滴吹干，适用于食品业。
便利取出冲压后的成形品
洗车机洗后之水分吹干
空气的助燃与废气之排出。

洗瓶机吹干 Blow bottle rinser
冲床机 Punch machine
洗车吹干 Blow after car washing
焚化炉 Incinerator



以空气为动力输送文件既快速又准实
粉体粒体等之原料的空气传送
塑胶、布、纸等裁边后废屑自动收集。
水中的氧气补给用。

传票输送 Convey documents
粉粒体输送 Convey powder
纸布条吹送 Collect ribbons
养殖池氧气补给 Feed oxygen to breeding pool